

South Dakota  
**SIMMENTELLER** & North Dakota  
**SIMMENTAL SCENE**

FEBRUARY 2026





2026



*Bull Run*

**NEW DATE  
+ LOCATION**

**Saturday  
March 7, 2026**

**4 PM CST**

**SELLING**

**SIMMENTAL, HEREFORD,  
ANGUS, + BALANCER® BULLS  
PLUS COMMERCIAL FEMALES**

- BID ONLINE WITH DV AUCTION •
- MEAL SERVED •
- ENTERTAINMENT AFTER THE SALE •

**47189 US HWY 18 - WORTHING, SD 57077**

PRESENTED BY:

**SECTION 16**  
CATTLE COMPANY



ASA#: 4507212



5/8 SM  
3/8 AN

**HZN NIGHT RIDER N10**

HZN KICK START K238 x TJ WARPAINT 759J

ASA#: 4568521



PB SM

**MARK'S RESOURCE 17N**

BRIDLE BIT RESOURCE G9117 x LBRS GENESIS G69

ASA#: 4568506



PB SM

**MARK'S LIMITLESS 3N**

ES FIVE STAR LIMITLESS LJ39 x KRJ DAKOTA OUTLAW G974

ASA#: 4568511



3/4 SM  
1/4 AN

**MARK'S NACHO 14N**

CLRS HERDBOOK 316H x RFS HERALD H104

ASA#: 4568512



3/4 SM  
1/4 AN

**MARK'S NIGHTCAP 16N**

MR SR MIC DROP G1534 x W/C BANKROLL 811D

ASA#: 4568508



1/2 SM  
7/16 CS  
1/16 AN

**MARK'S NORMAN 10N**

GIBBS 9114G ESSENTIAL

**- CONTACT US -**

**WEBSITE: WWW.I29BULLRUN.COM**

**FIND US ON FACEBOOK**



**ANDY MARK: 712.441.5920**

**ERIK SCOTT: 605.214.1332**

**CRAIG BROUGHTON: 605.951.7595**

**PHIL EGGERS: 605.351.5438**

**CATALOG  
REQUEST**





[www.NorthDakotaSimmental.com](http://www.NorthDakotaSimmental.com)

**Lyndon Hoiby, McGregor** ..... **President**  
(701) 641-1083 ..... hoibysim@nccray.com

**Jason Quandt, Oakes** ..... **Vice President**  
(701) 710-0080 ..... jason@quandtbrothers.com

**Kim Myers, Kathryn** .... **Secretary/Treasurer**  
(701) 308-1018 ..... gkmyers@outlook.com

**Jaxon Deckert** ..... **Director**  
(701) 425-5882 ..... jaxonwd3@gmail.com

**Wyatt Hansen, Ryder** ..... **Director**  
(701) 720-4850 ..... wyattnhansen@gmail.com

**Trey Klain** ..... **Director**  
(701) 531-2008 ..... trey.klain@gmail.com

**Matt Kline, Hurdsville** ..... **Director**  
(701) 693-6317 ..... klsrscows@gmail.com

**Ethan Steffan, Killdeer** ..... **Director**  
(701) 290-0371 ..... ethansteffan@gmail.com

**Derek Sys, Douglas** ..... **Director**  
(701) 509-5870 ..... dj.sys@hotmail.com

## South Dakota SIMMENTELLER & North Dakota SIMMENTAL SCENE

**Editor** ..... Tamra Heins, New Salem, ND  
(701) 391-6431 • tamra@strategicconcepts.biz

**Design** ..... Sheyna Strommen, Solen, ND  
(701) 290-3886 • strommen@westriv.com

The following terms and conditions have been agreed on by the North Dakota & South Dakota Simmental Association's Board of Directors and the Publication Committee:

### Advertising Space Rates

Size .....	4C
Full Page: .....	\$675
1/2 .....	\$475
1/4 Page .....	\$275

### Advertising Deadlines

Issue .....	Deadline
January, 2026 .....	Dec. 15, 2025
February, 2026 .....	Jan. 15, 2026
November, 2026 .....	Oct. 15, 2026

**Terms:** All advertising accounts are due and payable as invoiced. Interest charges of 1% per month will be assessed to accounts that are 30 days past due.

**Delinquent Advertiser's Account:** Advertisers knowingly and expressly agree and consent that, whenever accounts receivable for an advertiser have not been paid as of 90 days from date involved, advertising privileges will be suspended until full payment has been received.

**Copy Changes:** Alterations in advertising copy, if requested after closing dates, will be permitted only if time allows.

The North Dakota and South Dakota Simmental Associations and this publication reserve the right to refuse any advertising copy at our sole discretion. The North Dakota and South Dakota Simmental Associations and this publication assume no responsibility for the accuracy of the advertising content submitted. Advertisers assume all responsibility for the accuracy and truthfulness of submitted advertising containing pedigrees or statements regarding performance.

**Editorial Content:** Opinions expressed are those of the writer and not necessarily those of the North Dakota and South Dakota Simmental Associations or of this publication. Photographs and manuscripts are welcome, but no responsibility is assumed either while in transit or while in this office.

**About the Cover:** The pasture photo was captured by Matt Kline of Kline Simmentals, Hurdsville, ND. If you'd like to see an image from your ranch grace the cover of an upcoming issue, e-mail a high-resolution image to Tamra Heins.

South Dakota



[www.SouthDakotaSimmental.com](http://www.SouthDakotaSimmental.com)

**Bridget Twedt, Beresford** ..... **President**  
(605) 777-5404 ..... bridget.twedt@k12.sd.us

**Brett Tostenson, Highmore** . **Vice President**  
(320) 226-3915 ..... blacksandranch@gmail.com

**Kevin Blagg, Salem** ..... **Treasurer**  
(605) 240-0015 ..... kblagg@firstdakota.com

**Tom Harris, Plankton** ..... **Secretary**  
(605) 999-8803 ..... harriscattle6@gmail.com

**Tyrell Mitchell, Kadoka** ..... **Director**  
(605) 488-0119 . tcmsimmentals@outlook.com

**Mike Thyen, Hayti** ..... **Director**  
(605) 520-0575 ..... tbirdlab@itctel.com

**Cory Altena, George** ..... **Director**  
(605) 366-0400 altenashowcattle@frontier.net

**Andy Mark, Viborg** ..... **Director**  
(712) 441-5920 ..... ajmark398@gmail.com



MAKE AN

IMPACT

LEAVE A

*Legacy*



PROUD TO HAVE BRED & RAISED BOTH THE

*2024* SUPREME CHAMPION FEMALE & *2025* SUPREME CHAMPION FEMALE

AT THE CANADIAN WESTERN AGRIBITION CN BEEF SUPREME





**\*NEW DATE**  
**22<sup>ND</sup> ANNUAL BULL SALE**  
**TUESDAY MARCH 10, 2026**  
**SELLING 100 SIMMENTAL & ANGUS BULLS**



**FOR THE FIRST TIME IN 35+ YEARS**

**WE WILL BE OFFERING A SELECT GROUP OF PUREBRED FEMALES**  
SIMMENTAL & ANGUS OPEN REPLACEMENT FEMALES FROM *THE VERY TOP* OF THE PROGRAM



VERN & DENISE | RILEY & MADISON | CODY-RAY & SHAYNE  
BIENFAIT, SK | [WWW.WHEATLANDCATTLECOMPANY.COM](http://WWW.WHEATLANDCATTLECOMPANY.COM) | 306-461-8200



SHANE, ALAINA, MCKENNA & KADEN MICHELSON  
403-363-9973



*Raising Simmental since 1968,  
Charolais since 1958.*

**DOLL RANCH**  
*Charolais & Simmental*

46TH ANNUAL PRODUCTION SALE

*We would like to thank our  
new and returning customers.*

*Tuesday, March 3, 2026*

1:00 PM CST • KIST LIVESTOCK • MANDAN, ND

*Selling Top Genetics from Both Breeds!*

**100 SPRING CHAROLAIS BULLS • 70 SPRING SIMMENTAL BULLS**

**5 OPEN CHAROLAIS & SIMMENTAL HEIFERS**



**DCR MR NAIL-IT N061**

4603746 • Red • Homo Polled • BD: 2/3/25  
Sire: DCR MR Hard Impact H69 • Dam: DCR MS Vander L050  
BW -0.2, WW 106.3, YW 160.8, MLK 27.1, MWW 80.1,  
API 141.8, TI 97.5, 205 WT: 836, 365 WT: 1512



**DCR MR JACKSON N240**

4603799 • Red • Homo Polled • BD: 2/25/25  
Sire: BCLR Jackson J9975 • Dam: DCR MS Gizmo L398  
BW 2.5, WW 90.9, YW 150.6, MLK 25.7, MWW 71.0,  
API 122.3, TI 85.8, 205 WT: 864, 365 WT: 1499



**DCR MR NETWORK N243**

4603696 • Red • Homo Polled • BD: 2/25/25  
Sire: Traxs Longmire L43 • Dam: DCR MS Red D Impact K257  
BW 5.8, WW 106.2, YW 155.0, MLK 28.1, MWW 81.1,  
API 124.2, TI 89.4, 205 WT: 854, 365 WT: 1497



**DCR MR NEON-LIGHT N453**

4603839 • Red • Homo Polled • BD: 3/13/25  
Sire: Redhill Burley 99J • Dam: DCR Miss Hometown H339  
BW 1.3, WW 89.6, YW 139.1, MLK 28.9, MWW 73.6,  
API 146.0, TI 89.8, 205 WT: 816, 365 WT: 1383



**DCR MR NUTCRACKER N009**

4603761 • Homo Black • Homo Polled • BD: 1/27/25  
Sire: KBHR Honor H060 • Dam: DCR MS Genesis L292  
BW -0.1, WW 101.9, YW 151.7, MLK 24.6, MWW 75.4,  
API 176.1, TI 108.9, 205 WT: 817, 365 WT: 1468



**DCR MR NIGHTCLUB N102**

4603782 • Homo Black • Homo Polled • BD: 2/8/25  
Sire: MYY/SAS Honor L90 • Dam: DCR MS Batman L522  
BW 0.5, WW 93.4, YW 151.2, MLK 31.9, MWW 78.6,  
API 147.0, TI 91.7, 205 WT: 881, 365 WT: 1406



**DCR MR NIGHTSTAND N122**

4603708 • Homo Black • Homo Polled • BD: 2/11/25  
Sire: BC1 Structure J111 • Dam: DCR MS B Hawk K140  
BW 1.5, WW 92.1, YW 123.0, MLK 26.2, MWW 72.2,  
API 150.4, TI 92.0, 205 WT: 812, 365 WT: 1352



**DCR MR NINJA N426**

4603632 • Homo Black • Homo Polled • BD: 3/10/25  
Sire: LCDR Innovation 163L • Dam: KR Miss J80  
BW 1.7, WW 78.0, YW 118.6, MLK 28.4, MWW 67.3,  
API 141.6, TI 85.3, 205 WT: 790, 365 WT: 1364



**DCR MR LANDMARK N450**

4603866 • Homo Black • Hetero Polled • BD: 3/13/25  
Sire: DCR MR Landmark ET L076 • Dam: DCR MS Resource J5  
BW 2.2, WW 92.6, YW 148.3, MLK 29.9, MWW 76.1,  
API 139.8, TI 89.5, 205 WT: 815, 365 WT: 1501

*Doll Charolais & Simmental Ranch*

**DVAuction**  
*Broadcasting Real-Time Auctions*

Charles & Pamela Doll • 701-843-8673 • [dollboyz@westriv.com](mailto:dollboyz@westriv.com) • Harlan & Jodie Doll • 701-843-8771 • David & Donna Doll • 701-843-7947 • [dollfarm@westriv.com](mailto:dollfarm@westriv.com)

3991 36th St., New Salem, ND 58563 • [WWW.DOLLFARMS.COM](http://WWW.DOLLFARMS.COM)



# BREEDING FOR THE FUTURE

## WILKINSON FARMS SIMMENTALS

**FEBRUARY 19, 2026** 1:00 PM CST AT THE C-B SALE FACILITY  
4 MILES SOUTH OF THE RANCH, MONTPELIER, NORTH DAKOTA  
**28<sup>TH</sup> ANNUAL PRODUCTION SALE**



**WS SWEET SIXTEEN F16**  
PB SM Homo Black, Homo Polled ASA 3431735  
Selling this cornerstone donor cow.



**9N** ASA 4535819  
PB SM Red, Homo Polled  
WS LANDMARK 14L x ROCKIN H CAPTIVATE J75



**33N** ASA 4536015  
PB SM Homo Black, Homo Polled  
IR/JLN BOOMER x CDI HIT MAN



**4N** ASA 4535944  
PB SM Red, Homo Polled  
BRIDLE BIT HERSCHEL H027 x HOOK`S FULL FIGURES 11F



**25N** ASA 4535836  
3/4 SM 1/4 AN Homo Black, Homo Polled  
KLEIN KICK OFF K068 x KBHR HERO H109



**48N** ASA 4535861  
PB SM Red, Homo Polled  
WS TOMKAT 54K x HOOK`S FULL FIGURES 11F



**12N** ASA 4535940  
PB SM Homo Black, Homo Polled  
KBHR ABSOLUTE K125 x HOOK`S FULL FIGURES 11F



**55N** ASA 4535969  
3/4 SM 1/4 AN Red, Homo Polled  
BCLR FORGE J8871 x CLRS GUARDIAN 317G



**6N** ASA 4535936  
PB SM Homo Black, Homo Polled  
WS ENHANCEMENT 25H x 9 MILE ABUNDANCE 7507

## 60 SIMMENTAL AND SIMANGUS™ BULLS 20 BRED FEMALES



**DVAuction**  
Broadcasting Real-Time Auctions

**TERRY AND CATHY SCHLENKER FAMILY** MONTPELIER, NORTH DAKOTA [www.wilkinsonfarmssimmentals.com](http://www.wilkinsonfarmssimmentals.com)   
Terry 701-320-2171 - Aaron call/text 701-269-8271 - Jordan 701-320-1895 - [eatbeef@daktel.com](mailto:eatbeef@daktel.com)  
**WE REQUEST NO FRIDAY NIGHT OR SATURDAY CALLS OR VISITS, PLEASE.**

Marty Ropp 406-581-7835  
Corey Wilkins 256-590-2487  
Jared Murnin 406-321-1542

**ALLIED**  
GENETIC RESOURCES  
[alliedgeneticresources.com](http://alliedgeneticresources.com)



# Heins Sight...

By Tamra Heins, Editor



Pictured, L to R, Allen Vollmer, Tony, AJ and Tamra Heins

The bull sale season has begun in the Northern Great Plains. So far, the sales have been great, and all indicators point to continued strong prices.

My family once again exhibited bulls in the National Western Stock Show Angus Pen Bull Show and was awarded Reserve Overall. It was fun to be able to have my Dad there to get in the backdrop photo. The National Western has always been one of my favorite places and part of that is because over the years, just my Dad and I have taken the trip together. I can't even remember what year it was when we went there for the first time but I do remember when I was in high school, girls' basketball was in the Fall, so it was easy for me to get to go. I know we usually drove to Denver, but I do remember when we got on a chartered bus with many other seedstock breeders and had a pretty good time on that road trip!


My Dad's last visit to Denver was ten years ago. He chaperoned my then, ten-year old son, AJ, on an airplane ride and we all flew home together. At that time, it wasn't so easy to get a guy with two replacement knees and two replacement hips through security, but it seems technology has evolved


and that wasn't an issue on this trip. And... we marked the occasion with a photo. I don't think there are too many photos of just us two but in the world we live in now, it didn't happen unless you took a picture.

So many changes have happened at the National Western in the last ten years, especially in how the grounds have evolved over the last few years. We were thoroughly impressed with the new show ring and the beautiful new buildings. We both thought it is nice that very wealthy people like to share their name on the side of buildings. And the weather was a lot better than North Dakota for the 34 hours we were there.


The February issue marks the end of the season for the SD SimmenTeller and ND Simmental Scene. Our next issue will publish in November. Thank you to everyone who supported the magazine this season and trusted us with their marketing dollars.

Good luck to everyone this bull sale season, I hope the roads and the sale lunches are good. Enjoy the day...





Colorado Bridle Bit E752 • ASA# 3271382



Deer Vally Growth Fund • ASA# 3681957

OTHER SIRES INCLUDE: TJ Stone Cold • T/D Patton 771

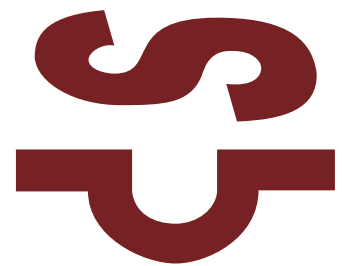
**CHRISTENSEN SIMMENTAL & ANSON RANCH**  
37548 221st Street • Wessington Springs, SD 57382  
Chris: 605-539-9522 • Amy: 605-350-0103 • Alex: 605-350-0200

**55<sup>TH</sup> ANNUAL Online PRODUCTION SALE**  
**April 26, 2026**  
*Selling 75 Yearling Bulls*  
Online-only Sale  
Bids Close at 6 p.m.  
**DVAuction**  
*Visitors always welcome*  
7N 7W of Wessington Springs, SD

E-mail for more info: [chrishei@venturecomm.net](mailto:chrishei@venturecomm.net)

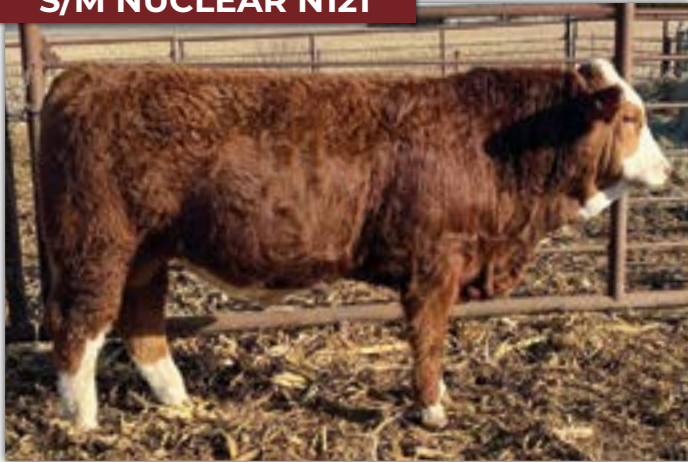


# GENERATIONS OF POWERFUL, DEPENDABLE PERFORMANCE!



**ANNUAL PRIVATE TREATY BULL SALE - MARCH 2, 2026**

**S/M NUCLEAR N121**



Polled ▪ WW: 741/102 ▪ Sired by Kuntz Kingpin 2H

**S/M NAVIGATOR N191**



Homo Polled ▪ WW: 731/100 ▪ Sired by IPU Pol Elevation

**S/M NOTARY N561**



Horned ▪ WW: 738/101 ▪ Sired by JNR Barbarian

**S/M NEWTON N282**



Polled ▪ WW: 784/108 ▪ Sired by JNR Barbarian



PLEASE SEE OUR WEBSITE OR CALL/TEXT FOR MORE INFORMATION

**[www.smfleckvieh.com](http://www.smfleckvieh.com)**



**S/M FLECKVIEH CATTLE**  
Jeff Sorenson | 605-359-8728 (c)  
Garretson, South Dakota  
[sorenson@augie.edu](mailto:sorenson@augie.edu)



# HORIZON VIEW FARMS & B2/U STOCK

## *Big Picture* **COMMITMENT** *Production Sale*

**SATURDAY, MARCH 14TH**

NOON / CANOVA, SD

**70 SIMMENTAL & SIMANGUS™ BULLS  
20 HEIFER PAIRS**



CLRS LINCOLN 0107L X  
TJ GOLD 274G  
5/8 SM (4610019)



WINC LAW BREAKER 376L X  
MR SR HIGHLIFE G1609  
5/8 SM (4609992)



W/C KAISER 240J X  
BRKC DAPHNE DY37  
PB SM (4609790)



JWC 2/F LIVING PROOF 283L X  
SCC FIRST-N-GOAL GAF 114  
1/2 SM (4610002)



ZTGC JUST CUZ 52K X  
PVF INSIGHT 0129  
1/2 SM (4388766)

SELLS WITH  
HZN  
KICKSTART  
CALF



DAKOTA OUTLAW X  
GRANDMASTER (GRANDSIRE)  
PB SM (4460019)  
SELLS WITH TRUE BALANCE CALF



W/C KAISER X JC ENGINEER  
PB SM (4460005)  
SELLS WITH POINT PROVEN CALF



DAKOTA OUTLAW X DEW IT RIGHT  
3/4 SM (4460007)  
SELLS WITH POINT PROVEN CALF

**HORIZON  
VIEW  
FARMS**  
CANOVA, SD

**B<sup>2</sup>/U Stock**

COLTON BUUS 605-214-3532  
CHARLES BUUS 605-214-3529  
SHELBY BUUS 605-214-1243

SEE HORIZON VIEW FARMS LLC  
ON FACEBOOK FOR UPDATES

**DVAuction**  
*Breakfasting Real Estate Auctions*



Where 50 years of genetics meet your future.



**N633**

#4562824 | Sire: SCHOOLEY LEVITICUS 1023L  
3/4 SM 3/16 AR 1/16 CS | API: 148.9 · TI: 89.5



**N601**

#4562899 | Sire: IR/JLN BOOMER J425  
Purebred Simmental | API: 170.2 · TI: 105.1



**N622**

#4562851 | Sire: CLRS JEFFERSON 951J  
1/2 SM 3/8 AR 1/8 AN | API: 153.6 · TI: 92.6



**DSR JERON M406**

#4375300 | Sire: CLRS JEFFERSON 951J  
1/2 SM 3/8 AR 1/8 AN | API: 159.0 · TI: 88.4  
AI bred to Hook's Hercules 209H

EPDs as of 1-19-26

**50** Annual Production Sale  
**Tuesday,**  
**February 24, 2026**

Sale: 2 p.m. CST · At the Ranch

*Selling:*

**50 Yearling Bulls · 20 Bred Heifers**

**DVAuction**  
Broadcasting Real-Time Auctions

Request  
a Catalog



**DECKERT**  
Simmental Ranch

Justin and Carrie Deckert: (701) 425-6673  
Jaxon Deckert: (701) 425-5882  
24952 392nd St NE · Arena, ND 58494  
dsrscows@bektel.com

Connect with us!



Deckert Simmental Ranch

COWCAMP



## NDSU EXTENSION RELEASES 2026 SHORT- AND LONG-TERM AG PLANNING PRICE PROJECTIONS

By Ron Haugen, NDSU Farm Management Specialist, Tim Petry, NDSU Livestock Economist and Frayne Olson, NDSU Crops Economist

Planning for the future can be a very frustrating process, especially in times of market volatility. Planning typically pays high dividends. For most farm and ranch managers, developing realistic commodity price expectations is one of the most difficult and complex tasks of the planning process.

To make the planning process easier, North Dakota State University Extension has released its 2026 short- and long-term agricultural planning price projections for North Dakota.

"Estimating short-term planning crop prices is more important than ever," says Ron Haugen, NDSU Extension farm economist.

"Price projections should be used as a guide in setting expectations for the 2026 production."

These planning prices can be used for preparing annual enterprise budgets and annual whole-farm cash flow projections.

"Cash flow projections are very critical with today's tight margins," adds Haugen.

Livestock price projections are hitting new highs, but crop price projections are lower than a year ago.

The publication shows 2026 price projections for crops and livestock produced in the state as well as price estimates for future years. Price projections are given for the major crop commodities, including wheat, durum, oats, feed barley, malting barley, oil sunflowers, non-oil sunflowers, corn, soybeans, canola, flaxseed, winter wheat, dry beans, dry peas, lentils, alfalfa hay and mixed hay.

Price projections for livestock and livestock products include beef steers and heifers at various weights, cull cows, slaughter steers, slaughter hogs, slaughter ewes, slaughter lambs, feeder lambs and milk. The publication also provides historical prices as a reference.

Haugen cautions against using short-term prices for planning capital purchases or expansion alternatives that would extend beyond the next production year.

The "Plotting a Course 2026" publication is available online at [nds.ag/plotcourse26](https://nds.ag/plotcourse26) or by contacting an NDSU Extension county office.

2026 Planning Price Projections	
Crop	Price
Spring Wheat	\$5.75/bu
Durum Wheat	\$6.75/bu
Oats	\$2.50/bu
Feed Barley	\$3.00/bu
Malting Barley	\$5.00/bu
Oil Sunflower	\$21.00/cwt
Non-Oil Sunflower	\$26.00/cwt
Corn	\$3.75/bu
Soybeans	\$9.75/bu
Canola	\$20.00/cwt
Flaxseed	\$13.50/bu
Winter Wheat	\$5.00/bu
Dry Beans	\$27.00/cwt
Dry Peas	\$11.67/cwt
Lentils	\$19.00/cwt
Alfalfa Hay	\$95.00/ton
Mixed Hay	\$70.00/ton



### PRIVATE TREATY BULL SALE



**RED, BLACK & BLAZED FACE BULLS**

Simmentals, Black & Red SimAngus™ Bulls



**SIRES REPRESENTED:**

CLRS Homeland  
KBHR Honor  
TJ Stonecold  
R&R KRJ Golden Book H0135

**VanderWal Simmentals**

20758 464th Ave • Bruce, SD 57220

Dean: 605-627-5208 or 605-690-1901 or Kent 605-690-0234

[vwbeef@hotmail.com](mailto:vwbeef@hotmail.com)

2026 Planning Price Projections	
Livestock and Milk	Price/cwt
400-500 lb Beef Steers**	\$450.00
500-600 lb Beef Steers**	\$395.00
600-700 lb Beef Steers**	\$360.00
700-800 lb Beef Steers**	\$340.00
800-900 lb Beef Steers**	\$325.00
1100-1700 lb Cull Cows	\$155.00
250 lb Slaughter Hogs	\$65.00
Slaughter Ewes	\$90.00
105-140 lb Slaughter Lambs	\$220.00
60-90 lb Feeder Lambs	\$260.00
All Milk	\$20.00

\* To estimate heifer prices subtract \$30/cwt

\*\* To estimate heifer prices subtract \$20/cwt

\*\*\* To estimate heifer prices subtract \$10/cwt

† Fourth quarter 2025 prices

‡ First quarter 2026 prices



# TSN SIMMENTALS

## Annual Bull Sale

**FEBRUARY 24**  
**PLATTE, SD**  
**1 PM** Platte  
 Livestock  
 Market



**N312**

CE	YW	STAY	MARB	RE	SAPI	STI
18.0	165.4	21.4	0.29	1.02	166.1	102.8

ASA 4564142 - 3/4 SM 1/4 AN - TSN STATESMAN K006 SON



**N585**

CE	YW	STAY	MARB	RE	SAPI	STI
15.4	147.4	16.6	0.49	1.02	174.8	106.0

ASA 4564208 - PB SM - LCDR ANTHEM 33K SON



**N231**

CE	YW	STAY	MARB	RE	SAPI	STI
10.5	164.1	11.9	1.33	0.83	188.7	120.5

ASA 4564111 - 1/2 SM 1/2 AN - DB ICONIC G95 SON



**N302**

CE	YW	STAY	MARB	RE	SAPI	STI
12.2	164.8	18.4	0.90	0.78	179.8	112.1

ASA 4564132 - 1/2 SM 1/2 AN - DB ICONIC G95 SON



**N340**

CE	YW	STAY	MARB	RE	SAPI	STI
19.8	104.2	23.5	1.06	0.56	199.1	97.8

ASA 4564169 - 5/8 SM 3/8 AN - NEVER SAY NEVER 9 SON



**N358**

CE	YW	STAY	MARB	RE	SAPI	STI
5.2	157.4	15.0	0.67	0.86	148.4	100.7

ASA 4564187 - 3/4 SM 1/4 AN - TSN HOMESTEADER K023 SON

**70** Simmental AND  
 SimAngus™ Bulls

TSNSIMMENTALS.COM

# TSN SIMMENTALS

Tim and Sandy Naasz PLATTE, SD  
 c. 605-207-0229 h. 605-337-3503

ROUTE 9 SIMMENTALS - Wyatt & Sawyer Johnson - LaHarpe, IL

[alliedgeneticresources.com](http://alliedgeneticresources.com)

Marty Ropp 406-581-7835  
 Corey Wilkins 256-590-2487  
 Jared Murnin 406-321-1542

**DVAuction**  
 Broadcasting Real-Time Auctions

**ALLIED**  
 GENETIC RESOURCES



# KELLER BROKEN HEART RANCH

## MARCH 5, 2026

120 HIGH-PERFORMANCE RED AND BLACK  
SIMMENTAL AND SIMANGUS BULLS

1:00 PM AT THE RANCH IN MANDAN, ND



G A R FIREPROOF x KBHR GRACE KELLY L163

**N161**

ASA 4545043 1/2 SM 1/2 AN Homo Black - Homo Polled

CE	BW	WW	YW	STAY	MARB	REA	\$API	\$TI
19	-2.3	85	147	17	1.46	0.67	215	118



G A R FIREPROOF x KBHR MEDORA G132

**N195**

ASA 4545077 1/2 SM 1/2 AN Homo Black - Homo Polled

CE	BW	WW	YW	STAY	MARB	REA	\$API	\$TI
18	-2.2	78	130	20	1.28	0.63	206	109



WS JAM-PACKED 88J x KBHR J103 MS RED AUTUMN

**N242**

ASA 4545124 PB SM Red - Homo Polled

CE	BW	WW	YW	STAY	MARB	REA	\$API	\$TI
17	-4.2	85	129	24	0.61	0.83	195	103



BRIDLE BIT GALAXY L361 x KBHR MEDORA G132

**N332**

ASA 4545214 PB SM Homo Black - Homo Polled

CE	BW	WW	YW	STAY	MARB	REA	\$API	\$TI
21	-4.3	73	109	17	0.96	0.82	201	105



KBHR HOMELANDER J071 x KBHR J101 MS EMERGENCE

**N066**

ASA 4544948 3/4 SM 1/4 AN Homo Black - Homo Polled

CE	BW	WW	YW	STAY	MARB	REA	\$API	\$TI
11	-1.1	95	151	20	1.30	0.88	203	117



ES JACK RED LG11 x KBHR J103 MS RED AUTUMN

**N160**

ASA 4545042 PB SM Red - Homo Polled

CE	BW	WW	YW	STAY	MARB	REA	\$API	\$TI
14	-0.1	93	148	20	0.60	0.97	180	103

LUKE AND KATY 701-471-1142 // JAKE AND MACKENZIE 701-471-5065 // DWIGHT AND SUSAN 701-471-5215

1573 55TH STREET, MANDAN, ND 58554 // KBHR@WESTRIV.COM // KBHRSIMMENTAL.COM





WS JAM-PACKED 88J x KBHR J103 MS RED AUTUMN

**N231**

ASA 4545113 PB SM Red - Homo Polled

CE	BW	WW	YW	STAY	MARB	REA	\$API	\$TI
14	-1.6	88	143	23	0.40	1.30	176	97



KBHR DISCIPLINE L046 x KBHR J170 MS SUGAR FLARE

**N146**

ASA 4545028 PB SM Homo Black - Homo Polled

CE	BW	WW	YW	STAY	MARB	REA	\$API	\$TI
15	-2.8	81	117	20	0.77	1.16	188	103



KBHR HOMESTEAD H016 x KBHR GRACE KELLY L163

**N029**

ASA 4544911 PB SM Homo Black - Homo Polled

CE	BW	WW	YW	STAY	MARB	REA	\$API	\$TI
19	-4.2	86	127	21	0.87	1.09	205	110



ES JACK RED L611 x KBHR J103 MS RED AUTUMN

**N142**

ASA 4545024 PB SM Red - Homo Polled

CE	BW	WW	YW	STAY	MARB	REA	\$API	\$TI
13	-0.5	100	153	19	0.54	0.96	174	105



G A R FIREPROOF x KBHR MEDORA G132

**N131**

ASA 4545013 1/2 SM 1/2 AN Homo Black - Homo Polled

CE	BW	WW	YW	STAY	MARB	REA	\$API	\$TI
20	-1.8	84	143	21	1.31	1.00	216	113



BRIDLE BIT GALAXY L361 x KBHR J284 MS RED OCTOBER

**N092**

ASA 4544974 PB SM Homo Black - Homo Polled

CE	BW	WW	YW	STAY	MARB	REA	\$API	\$TI
10	1.1	101	153	16	0.92	0.96	184	113



KBHR HOMESTEAD H016 x KBHR DEBUTANTE H113

**N163**

ASA 4545045 PB SM Homo Black - Homo Polled

CE	BW	WW	YW	STAY	MARB	REA	\$API	\$TI
14	-1.8	95	144	22	1.07	0.78	210	117



ES JACK RED L611 x KBHR J103 MS RED AUTUMN

**N121**

ASA 4545003 PB SM Red - Homo Polled

CE	BW	WW	YW	STAY	MARB	REA	\$API	\$TI
14	-0.2	92	140	21	0.54	0.99	175	101



KBHR HOMELANDER J071 x KBHR J029 MS SUGAR HIGH

**N046**

ASA 4544928 3/4 SM 1/4 AN Homo Black - Homo Polled

CE	BW	WW	YW	STAY	MARB	REA	\$API	\$TI
12	-2.1	100	158	13	1.17	1.47	186	118





# 50

Coming Two Year Old  
Simmental, Angus  
& Simm-Angus Bulls

**WEDNESDAY,  
FEBRUARY 18, 2026  
AT THE FARM**



Miles & Bonnie Glasman  
Jared & Chelsey Glasman  
Russell, Manitoba  
Home: 204.773.3279  
Miles' Cell: 204.773.6275  
Jared's Cell: 204.796.0999

[mjsimmentalangus@gmail.com](mailto:mjsimmentalangus@gmail.com)  
[www.mjsimmentalangus.com](http://www.mjsimmentalangus.com)  
[mlg@glasmanfarms.com](mailto:mlg@glasmanfarms.com)  
[www.glasmanfarms.com](http://www.glasmanfarms.com)  
**find us on**



Matthew & Leanne Glasman  
& Family  
Russell, Manitoba  
Home: 204.773.3209  
Matt's Cell: 204.773.6055





LOT 75

Reg #: 4608736 • PB SM • Adj. 205: 751/111

CE	BW	WW	YW	MCE	Milk	MWW	API	TI
3.5	3.2	101.8	169.0	-0.1	31.0	81.8	137.7	96.0



LOT 16

Reg #: 4601630 • PB SM • Adj. 205: 804/113

CE	BW	WW	YW	MCE	Milk	MWW	API	TI
8.6	2.0	92.7	133.8	6.5	30.8	77.1	119.6	85.9



Annual Production Sale:  
**FEB. 20, 2026**

KIST LIVESTOCK, MANDAN, ND • 1 P.M.

**135 BULLS**

**60 BRED HEIFERS**

RED • BLACK • SIMMENTAL • SIMANGUS™  
DNA TESTED



LOT 127

Reg #: 4601419 • 3/4 SM 1/4 AN • Adj. 205: 758/107

CE	BW	WW	YW	MCE	Milk	MWW	API	TI
12.1	-0.2	80.5	124.2	6.2	30.5	70.7	135.4	82.9



LOT 17

Reg #: 4601508 • PB SM • Adj. 205: 772/109

CE	BW	WW	YW	MCE	Milk	MWW	API	TI
9.4	1.6	85.1	129.8	4.4	29.3	71.7	131.3	82.7

## SIMMENTAL PERFORMANCE with MATERNAL RESILIENCE!



LOT 72

Reg #: 4608698 • PB SM • Adj. 205: 773/114

CE	BW	WW	YW	MCE	Milk	MWW	API	TI
2.5	4.4	100.8	161.7	2.4	29.5	79.8	138.5	91.4



LOT 38

Reg #: 4601524 • PB SM • Adj. 205: 796/112

CE	BW	WW	YW	MCE	Milk	MWW	API	TI
9.3	2.3	91.6	140.6	7.0	32.9	78.6	138.7	92.5



LOT 181

Reg #: 4453671 • 3/4 SM 1/4 AN • Adj. 205: 539/83

CE	BW	WW	YW	MCE	Milk	MWW	API	TI
16.8	-2.6	74.9	124.1	9.2	26.7	64.1	137.5	78.1

Bred to Martin Gunpowder L331 • Due 3/8/26



LOT 115

Reg #: 4601639 • 3/4 SM 1/4 AN • Adj. 205: 829/117

CE	BW	WW	YW	MCE	Milk	MWW	API	TI
5.1	3.5	91.9	142.4	4.5	23.7	69.6	118.2	81.7



LOT 63

Reg #: 4601543 • 1/2 SM 1/2 AR • Adj. 205: 863/121

CE	BW	WW	YW	MCE	Milk	MWW	API	TI
2.0	3.9	93.4	141.2	0.9	31.3	77.8	111.4	79.0



LOT 156

Reg #: 4448784 • 1/2 SM 1/2 RA • Adj. 205: 692/114

CE	BW	WW	YW	MCE	Milk	MWW	API	TI
6	3.1	84.3	132	5.1	41.2	83.3	138	81.9

Bred to WS Hollywood 79H • Due 3/13/26

Contact us to be added to the mailing list:

DAKOTAPRESS.COM • [DNAuction](#)

**WADE STAIGLE FAMILY**  
(701) 226-6464

**KEVIN HANSEN FAMILY**  
(701) 720-6551



# REGIONAL CATTLEMEN ELECTED TO THE AMERICAN SIMMENTAL ASSOC. BOARD



*Tyan Thorson*



*Chris Effling*



*Chris Nicholson*

Montana rancher, **Ryan Thorson** of Glendive, has been elected to lead the American Simmental Association Board of Trustees. Thorson served as Vice Chairman in 2025, alongside outgoing Chairman Victor Guerra, of Linn, Texas.

Ryan Thorson operates Lassle Ranch Simmentals alongside his family near Glendive, MT, which has been in operation since the 1970s. The extended family involved in Lassle Ranch Simmentals includes Thorson; his wife, Sarah; their children, Grace and Harper; plus, Sarah's parents, Clay and Marianne Lassle. Their SimGenetics seedstock business is focused on producing bulls that will excel for their commercial customers, with an emphasis on adaptability and structure. The operation utilizes the latest in DNA technology and emphasizes data collection. A Wisconsin native, Thorson graduated from the University of Wisconsin–River Falls in ag sciences, then joined GENEX, starting in the beef genetics division. He spent six years as manager of the GENEX Hawkeye West semen collection facility in Billings, MT, before moving to the ranch full-time. Thorson served as Vice Chairman of the ASA Board of Trustees in 2025.

North Central Region representatives, Effling and Nicholson formally seated on the American Simmental Association Board of Trustees

**Chris Effling**, Highmore, SD, has been elected to the American Simmental Association Board of Trustees, representing the North Central region.

Effling grew up on a commercial cow-calf operation in eastern SD, participating in 4-H, FFA, and youth breed association activities. He attended South Dakota State University and worked for the Thomas Ranch and Eagle Pass Ranch. He and his wife, Kristi, who he met through 4-H and FFA, settled near Highmore, SD. Effling worked as a fieldman for the American Hereford Association for three years, covering KS, NE, ND, SD, and MN, and he has continued working the ring on sale day for breeders across the country. The Effling family founded CK Cattle in

1997, introducing Simmental genetics to the crossbreeding program early on. Today, CK Cattle is a progressive 250-head seedstock herd focused on creating high-quality, high-performance cattle that work for the real-world producer. AI and ET are prioritized. The formation of CK Cattle was supported by Kristi's parents, Lanny and Jayne Wager, and today they hold a joint production sale. CK Cattle also holds an open female sale online and consigns cattle to select sales.

**Chris Nicholson**, Kintyre, ND, has also been elected to serve the North Central region for the American Simmental Association Board of Trustees.

Chris Nicholson grew up on his family's C Diamond Ranch in south-central ND. After high school graduation, Nicholson completed a carpentry program before returning home to the ranch. In 2016, Nicholson and his wife, Julia, saw an opportunity to move up the road from the original family place and start their own operation, Lazy C Diamond, near Kintyre. Today, Lazy C Diamond Ranch is a family owned and operated Simmental seedstock business. The cow herd consists of 400 SimGenetics cow-calf pairs. The Nicholsons focus on creating cattle with breed-leading EPD, structural integrity, and performance. The cow herd is primarily three-quarter Simmental, and the program emphasizes the benefits of crossing SimGenetics cattle with Angus and Red Angus genetics. In addition to foundational feet and leg structure and udders, the Nicholsons focus on carcass quality, maternal calving ease, milk, and performance. Lazy C Diamond markets 18-month-old bulls, bred heifers, embryos, and genetic opportunities through their annual production sale in November. The family also grows oats, corn, rye, and alfalfa, which is largely utilized for feed. Through the incorporation of rotational grazing, cover crops, and tree planting, the Nicholsons focus on improving the natural ecosystem they manage.

Effling and Nicholson were formally seated at ASA's 58th Annual Meeting held in Oklahoma City, OK, January 10, 2026.



# TNT

# SIMMENTALS

41ST ANNUAL "CARRYING ON" THE EXPLOSIVE DIFFERENCE SALE

**Friday, FEBRUARY 13, 2026**

1 p.m. CST • At the ERBELE RANCH, Lehr, ND

Your **COMMERCIAL BULL HEADQUARTERS**, along with **BREED-LEADING HERDSIRES!**  
They are **THICK and DEEP** – All backed by the **TNT 100% GUARANTEE!**

Scan  
Here!



**DVAuction**  
Broadcasting Real-Time Auctions

Selling **133 Bulls**  
Simmental, SimAngus™ & Red Angus

Selling **60 Registered Bred Heifers**  
For the First Time In Over 30 years!

**Lot 3 – N810**



BD: 3/7/25  
Homo Blk  
PB SM  
WW Adj. 835/110  
#4572594

TNT Plateau L683 x Gibbs 7382E Broad Range  
Extreme Heifer Bull!

**Lot 48 – N829**



BD: 3/12/25  
Homo Blk  
5/8 SM 3/8 AN  
WW Adj. 885/117  
#4572614

TNT Assurance J455 x Rymo Extra Up U60D  
Tons of Power and Length!

**Lot 73 – N615**



BD: 3/10/25  
Homo Blk  
1/2 SM 1/2 AN  
WW Adj. 917/ET  
#4572455

Baldrige Badger x TNT Tanker U263  
Prolific Cow Family! 4 Flushmates Sell

**Lot 106 – N638**



BD: 3/14/25  
Red  
3/4 SM 1/4 AR  
WW Adj. 822/107  
#4572479

CDI Elevation 302K x LMG Gills Indeed 4736  
Exceptional Dam!

**Lot 123 – N553**



BD: 3/6/25  
Red  
1/2 SM 7/16 AR 1/16 AN  
WW Adj. 856/112  
#4572395

TNT Front Runner K609 x TNT Prodigy B366  
14 Brothers Sell!

**Lot 101 – N582**



BD: 3/8/25  
Red  
3/4 SM 5/32 AR 3/32 AN  
WW Adj. 836/109  
#4572424

TNT Dozer F439 x IR Imperial D948  
Dam is a Full Sister to TNT Assurance!

**Lot 39 – N534**



BD: 3/3/25  
Homo Blk  
5/8 SM 3/8 AN  
WW Adj. 842/110  
#4572376

TNT Plateau L683 x TNT BCR Unified B203  
Exceptional Dam!

**Lot 1 – N525**



BD: 3/1/25  
Homo Blk  
PB SM  
WW Adj. 845/110  
#4572367

Clemson Elite 41J x Gibbs 7582E Broad Range  
Full Brother to TNT First Class M476!

**Lot 79 – N621**



BD: 3/12/25  
Homo Blk  
3/4 SM 5/32 AN 3/32 AR  
WW Adj. 862/112  
#4572461

MR NLC Testament 2661K x TNT Defender F405  
Tons of Power and Length!

# TNT

## SIMMENTAL RANCH

Shanon & Gabe Erbele

6471 51st Ave SE • Lehr, ND 58460

(701) 527-5885 (Shanon's cell)

(701) 426-9445 (Gabe's cell)

gserbele@hotmail.com

Kevin & Lynette Thompson

5125 53rd St • Almont, ND 58520-9731

(701) 391-1631 (Kevin's cell)

(701) 843-8454

kevinandlynette@westriv.com



Contact us  
for a catalog!

- Volume discounts!
- Performance data and genomic-enhanced EPDs!
- No creep feed!
- Majority homozygous polled!
- All reds are non-diluters!
- All blacks will be homozygous- or heterozygous-black verified!

Bulls viewable anytime at the **Erbele Ranch, 30 m. S of I-94 Exit 228** • Videos & photos at [tntsimmentals.com](http://tntsimmentals.com) and [DVAuction.com](http://DVAuction.com)





# LaBatte Simmentals

46<sup>th</sup> Annual Bull & Female Sale

**Friday, March 6, 2026 • 1 p.m.**

Johnstone Auction Market, Moose Jaw, SK

**Guest Consignor: East Poplar Simmentals**

**SELLING APPROXIMATELY: 90 RED, BLACK AND FULLBLOOD BULLS**

**PLUS 11 OPEN HEIFERS**

## 2026 Sale Bulls



IPU 188N • Tommy Gunn x Hammertime



IPU 190N • RF Caliber x RPlus Yuma



IPU 151N • KWA Slider x RF Caliber



IPU 76N • Big Sky Chevy x Black Gold Elevation • Polled



## LaBatte Simmentals

invites our American neighbors to our 46<sup>th</sup> annual sale.

*Thank you to our 2025 customers representing USA Simmental operations. Your support is greatly appreciated.*

Visit our website:

**[www.LaBatteSimmentals.ca](http://www.LaBatteSimmentals.ca)**  
for a link to our 2026 Sale Catalogue.

**There is a bull for everyone at a LaBatte Bull Sale. We offer semen tested bulls, with free delivery to Montana, North and South Dakota with paperwork in order and no cost to you the buyer. We will work with you if you're outside this area.**

Sight unseen purchase program available. **Call Barry or Brodyn to discuss your needs. Call or text Barry at 306-815-7900. Brodyn: 306-815-7804.**

The use of video previews, telephone calls, our reliable sales staff - Bohrsen Marketing and ONLINE bidding have proven to work successfully for buyers who were unable to attend previous sales in person.

For pictures and videos of sale bulls & heifers, or a catalogue, e-mail Barry at [labatte.simm@sasktel.net](mailto:labatte.simm@sasktel.net) or call or text Barry at 306-815-7900.

**Take advantage of the current US dollar exchange rate.**

As of Jan 15<sup>th</sup>, a \$10,000 bull would cost you \$7,400 in U.S. Funds. Exchange rate will be announced sale day.

Sale at Moose Jaw, Sask., is approximately two hours from Plentywood, MT or two hours from Estevan, Sask.

**Online Bidding Available: [www.dlms.ca](http://www.dlms.ca)**

Mark Shologan at 780-699-5082

### Sale Day Phones:

Barry LaBatte at 306-815-7900

Kyron Manske at 306-267-7530

Auction Mart at 306-693-4715

Brodyn LaBatte at 306-815-7804

## Barry & Brenda LaBatte

PO Box 72, Gladmar, SK S0C 1A0

**Cell: 306-815-7900**

E-mail: [labatte.simm@sasktel.net](mailto:labatte.simm@sasktel.net)

Web: [www.LaBatteSimmentals.ca](http://www.LaBatteSimmentals.ca)

**Kyron Manske Cell: 306-267-7530**

## 2026 Sale Bulls



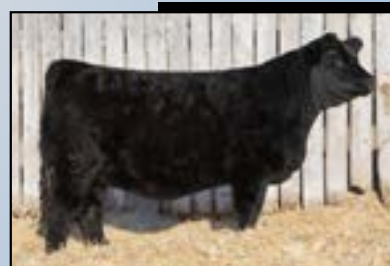
IPU 50N • Mountain View x Potent



IPU 126N • Red Top 108L x CPT Scream



IPU 205N • Tommy Gunn x IPU Bentley 81F



IPU 130N • RF Caliber x Top Tier  
Black Purebred Heifer



IPU 16N • Red Top x Betts  
Red Baldy Purebred Heifer



# Sorenson ranch

Your source for composite *Simmental*  
bulls that are bred for:

*Docility*  
**Longevity**  
**Fertility**

& Calves that PUSH DOWN the Scale

Average Actual Birth Weight: 80lbs

Average Adjusted 205: 756lbs

## Reference Sires:



**BDV GB Ignite 173F - ASA# 3553034**



**KECH Mr. 875 - ASA# 3836635**



**Ellingson Turnpike K252 - ASA# 4088856**



**HABR Eagle K201 - ASA# 4091829**



**Tchama Tahoe B767 - ASA# 3396482**

### ADDITIONAL REFERENCE SIRES:

LBS BRICKHOUSE H44 -

ASA# 4163960

JC MR PONTIAC D114K -

ASA# 4029546

G A TARGET 305 -

ASA# 4605409

## New & Upcoming Sires:



**QB Ironman K42 - ASA# 4117023**



**Bridle Bit GPS H078 - ASA# 3724830**

## Join Us:

# MARCH 4TH, 2026

2PM CST - SIDNEY LIVESTOCK MARKET CENTER - SIDNEY, MT  
FREE FEEDING - FREE DELIVERY WITHIN 500 MILES

## Selling:

60 SIMMANGUS BULLS  
60 COMMERCIAL OPEN HEIFERS  
10 BRED AGED COWS  
10 OPEN REGISTERED HEIFERS  
5 BRED REGISTERED HEIFERS

FREE FEEDING AND DELIVERY OFFERED FROM SALE DAY TO WHEN BULL(S) ARE DELIVERED. BULLS WILL BE FED FREE OF CHARGE, GUARANTEED SEMEN TESTED, AND DELIVERED BY APPROXIMATELY JUNE 1ST.

# Sorenson Ranch

Loren Sorenson: (701) 641-1140 or Deidra Sorenson: (701) 641-6999

Grenora, ND e-mail: lsorenson2627@gmail.com

Check us out on Facebook: Sorenson Ranch

www.sorensonranch.com

This sale will be broadcast live on the internet.

**DVAuction**

Broadcasting Real-Time Auctions

Real time bidding & proxy bidding available.



23<sup>rd</sup>  
ANNUAL BULL SALE

*Ashworth*  
Farm & Ranch Ltd.

*Monday, March 9<sup>th</sup>, 2026*  
OUNGRE, SASKATCHEWAN

*Calving Ease & Performance*



**KWA PROSPER 132N**  
CE 5.9 BW 5.1 WW 91.1 YW 143.4 Milk 25.4 MCE 3.4 API 123.22 TI 82.66



**KWA RIGHT TIME 216N**  
CE 5.4 BW 3.5 WW 77.8 YW 122.8 Milk 31.5 MCE 4.1 API 110.97 TI 72.33



**KWA TANGLE 225N**  
CE 5.9 BW 4.3 WW 90.4 YW 138.8 Milk 28.5 MCE 3.0 API 119.51 TI 78.78



**KWA DEW NORTH 2N**  
CE 11.8 BW 1.2 WW 82.2 YW 118.6 Milk 22.9 MCE 6.1



**KWA HARVESTOR 96N**  
CE 7.7 BW 2.3 WW 79.7 YW 115.4 Milk 18.9 MCE 3.5 API 107.38 TI 75.84



**KWA KINGSTON 113N**  
CE 6.1 BW 3.2 WW 85.0 YW 121.5 Milk 27.8 MCE 3.4 API 121.97 TI 79.48



**KWA ASSET 15N**  
CE 3.6 BW 4.7 WW 87.5 YW 124.7 Milk 23.2 MCE 3.8 API 99.33 TI 73.62



**KWA SOUTHSIDE 111N**  
CE 9.7 BW 1.3 WW 65.0 YW 91.2 Milk 26.0 MCE 2.7 API 112.44 TI 67.41



**KWA MOUNTAIN 93N**  
CE 7.8 BW 2.5 WW 79.1 YW 122.4 Milk 22.5 MCE 3.8 API 130.16 TI 80.07

OFFERING OVER 100 RED & BLACK SIMMENTAL BULLS  
INCLUDING BOTH YEARLING & SELECT 2 YEAR OLDS  
WE COVER ALL IMPORT & DELIVERY COSTS  
VOLUME DISCOUNTS OFFERED

YOUR TRUSTED SOURCE FOR  
INDUSTRY LEADING SIMMENTAL GENETICS

*The Ashworths*

PO BOX 53  
OUNGRE, SASKATCHEWAN

KELLY & JANICE  
KYLE, KELSEY & FAMILY

WATCH & BID ONLINE  
SALE TIME: 1:00 PM CST



TO REQUEST A CATALOGUE, CONTACT US:  
FACEBOOK: @ASHWORTHFARMANDRANCH | EMAIL: ASHWORTHFARMANDRANCH@GMAIL.COM  
CELL: KELLY: (306) 861-2013 | KYLE: (306) 861-9352





# Annual **BLACK GOLD** SIMMENTALS BULL & FEMALE SALE

**MARCH 14, 2026** AT THE FARM NEAR LLOYDMINSTER, SK

**SELLING 105 BULLS & 25 OPEN REPLACEMENT HEIFERS**  
YEARLING, EXTRA-AGE & TWO-YEAR OLD **FULLBLOOD, RED & BLACK SIMMENTALS**  
THESE BULLS SELL IN THE 2026 SALE

**CLNO 207N**



SIRE BLL ATOMIC 318L  
DAM BLACK GOLD/RUST MS ZAVIERA

**CLNO 27N**



SIRE BLL ATOMIC 318L  
DAM IPU 62B MS FRENCH ATTACK 41H

**CLNO 229N**



SIRE BLL ATOMIC 318L  
DAM VIRGINIA KOLETTE 240K

**CLNO 42N**



SIRE BLACK GOLD TANGLEFLAGS 31L  
DAM BLACK GOLD MS SUSAN 239H

**CLNO 120M**



SIRE DEEG EL DORADO 81K  
DAM MADER DARLIN' 4H

**CLNO 225N**



SIRE KWA HOLYFIELD 96J  
DAM BLACK GOLD MS SYLVIA 217K

**CLNO 167M**



SIRE ES RIGHT TIME FA110-4  
DAM KDP MISS HOYA HAYLEIGH

**CLNO 101N**



SIRE LFE CABARET 847J  
DAM BLACK GOLD MS SAUCY 70J

**CLNO 139N**



SIRE LFE CABARET 847J  
DAM IRCC FOX TROT 862F

**RANDY & VANESSA 306-821-0113 | TOBY 306-821-2071 | RYLEY 780-522-8385 | NEIL 780-808-9082 | JEFF 306-821-4383**



100

**X**

**RANCH**  
LLP

*Coming 2 Year  
Old Fleckvieh  
Bulls!*

2nd Annual Fleckvieh Bull Sale  
**FEBRUARY 17-18**

**SALE**

TIMED - ONLINE SALE AT **DVAuction**  
Established 1999 Auctioneers - Livestock - Real Estate

c/x

*The Annual - Class of 2026*



**"100X Fleckvieh...Our Way of Life"**  
*Visitors always welcome!*



Jamie Guttormson 701-833-8509 • Guttormj@outlook.com • Velva, ND



**thyensimmentals & salsaaangus**

# PRODUCTION SALE

6TH ANNUAL



**SATURDAY, FEBRUARY 21, 2026  
1:00PM**

## **THYEN SIMMENTALS**

### **Sires include:**

- **Mader Walk This Way**
- **KBHR Revolution**
- **TSA Magnum L357**
- **KCC1 Confederate**



[bit.ly/thyen-salsaa-2026](https://bit.ly/thyen-salsaa-2026)

**45142 183RD ST • HAYTI, SOUTH DAKOTA  
MIKE THYEN • 605-520-0575**

**f /THYENSIMMENTALS**



# 83 SOUTH SIMMENTAL BULL SALE

5<sup>TH</sup> ANNUAL

ONLINE AT DLMS

[farmgatetimedauctions.ca](http://farmgatetimedauctions.ca)

12PM START MARCH 13TH 2026

7PM CLOSE MARCH 14TH 2026



Sale Consultant: Craig Davidson  
Blacksand Cattle Company  
204-761-5991

This year's sale includes:



Downey 2541N - DYAL 2541N  
Downey 2261K, MGS: SVS Captain Morgan 11Z



BOF Rancher 41N  
SVS Rancher, MGS: Spring Creek Blue Chip



MEM 506N  
Mader Walk The Line 92J, MGS: MRL 91Y

## Open House

MARCH 6<sup>TH</sup> 12PM-5:30PM

Heartland Auction

Virden, MB

MARCH 14<sup>TH</sup> 12PM-5:30PM

Taylor Auctions Stock Yards

Melita, MB

FEATURING  
CONSIGNMENTS FROM

MORE BROS SIMMENTALS

Everett More Virden, MB

204-851-1737

DOWNEY FARMS

Ryan Downey Coulter, MB

204-522-0838

BAR O FARMS

Cole Oliver Melita, MB

204-264-0522





**BULL & FEMALE SALE**  
**WEDNESDAY FEBRUARY 25, 2026**  
AT THE FARM || SHELL LAKE, SK



**CROSSROAD**  
**REAPER 122N**  
SIRE CIRCLE G REGULATOR 70L  
DAMS SIRE LFE STRATTON 3094F



**CROSSROAD**  
**TULSA TIME 87N**  
SIRE SILVER LAKE JENNER 9J  
DAMS SIRE DOUBLE BAR D INTUITION



**CROSSROAD**  
**SHOCKWAVE 193N**  
SIRE CROSSROAD BLACK MISSILE 75K  
DAMS SIRE CROSSROAD CONNECTED 12G



TWO  
**\$5000**

SELLING  
**90 BULLS**  
& **14 OPEN HEIFERS**  
REDS || BLACKS || FULLBLOODS

CREDITS WILL BE DRAWN FOR BIDDERS IN ATTENDANCE  
TO PUT TOWARD THE PURCHASE OF A BULL OR HEIFER  
ON SALE DAY

**THE WOYTIUK FAMILY**

Jody & Jackie 306-227-9910 || Gerald & Laurie 306-427-4422  
*Olivia, Shelby, Jaici, & Cooper*  
Box 160 Shell Lake, SK S0J 2G0 || Crossroadfarms@sasktel.net

ONLINE WITH  
DLMS.CA



SALE CONSULTANT  
BOHRSON MARKETING





# MRL

## ANNUAL BULL SALE

**Saturday, March 7, 2026**

at the ranch, Carievale, SK

**200 Bulls Sell**

- All bulls born, bred and developed right here at MRL
- Large sire groups 1/2 and 3/4 brothers  
Pens full of uniform bulls in every category
- **Sight Unseen Buyer's Program**  
(Can't make it sale day, give us a call. Almost 25% of our bulls sell sight unseen. Many repeat customers year after year.)
- Semen evaluated and guaranteed
- Free delivery to Dunseith or North Portal Ports of Entry and we cover all health costs
- Only 12 miles north of Sherwood, N.D., jump in the car and come have a look
- Internet Bidding on DLMA
- Sound rugged bulls developed on a high roughage ration (Born, bred and fed to work and stay working)
- Extra Age bulls ready to cover some ground 50 May/June coming two year olds and January/February born yearlings

**McMillen Ranching Ltd. • Carievale, SK**

Lee: 306-483-8067

Dave: 306-483-8660

Jim: 306-483-7986

Sale Barn: 306-928-2011

F: 306-928-2027 • E: [mrl@sasktel.net](mailto:mrl@sasktel.net)

[www.mrlranch.com](http://www.mrlranch.com)

For catalogues, videos or more info. please contact us  
View Catalog at [www.mrlranch.com](http://www.mrlranch.com)

*Thank you to our U.S. customers.* Each and every year for the past 20+ years, almost 1/3 of our bulls sell to top cattlemen in the Northern States. Hundreds of bulls and dozens of the top ranches year in and year out! ***Come see for your self what keeps them coming back year after year.***

### Representing 60 Red Simmental Bulls



MRL 123N



MRL 207N



MRL 171N



MRL 55N

### Representing 60 Black Simmental Bulls



MRL 89N



MRL 129N



MRL 110N



MRL 119N

### Representing 60 Red and Black Angus Bulls



MRLA 122N



MRLA 17N

### Representing 60 May-Born Coming Two-Year-Old Bulls



MRL 278M



MRL 229M



100+ HEAD SELL // TUESDAY, MARCH 3, 2026 // AT THE FARM, GRENFELL, SK - 1:00 PM

# BEST OF BOTH WORLDS



DOUBLE BAR D .....

**LW 461N**

ULTRA/BARLEE LETHAL WEAPON 63L  
X MR SR RED OAK E1346

..... DOUBLE BAR D

**KIM'S ADONIS 271M**

SOUTHSEVEN MR ADONIS 96Z X TTU CANYON



..... DOUBLE BAR D

**CAPITALIST 528N**

RWR CAPITALIST 29K X DOUBLE BAR D BANKROLL 507F



**MARCH 3, 2026 100+ SIMMENTAL BULLS** *sell*  
AT THE FARM, GRENFELL, SK - 1:00 PM

SALE MANAGEMENT  
T Bar C Cattle Co. Ltd.  
306-933-4200  
info@tbarc.com  
Buyagro.com



WATCH & BID ONLINE



DOUBLE BAR D FARMS  
KEN DIMLER: 306-697-7204  
LOGAN DIMLER: 306-451-7229  
KENSHAU@YOURLINK.CA  
[DOUBLEBARDFARMS.COM](http://DOUBLEBARDFARMS.COM)



# FALL FOCUS SET FOR BOZEMAN IN AUGUST

Mark your calendars for the annual American Simmental Association Fall Focus event that will be held August 28-29 in Bozeman, Montana.

The first day is co-hosted by the Montana Simmental Association and will include tours and educational sessions. This will be a great time to connect with other SimGenetics breeders.

On August 29 there will be a day-long educational symposium featuring industry experts. Even though the event is hosted by the American Simmental Association, topics are always focused on the larger issues facing the beef industry, not just the Simmental breed. Last year's topic included cow size and producer considerations in relation to industry demand. Previous years included end product issues and discussion surrounding the yield grading system.

Following the Fall Focus, the Fall Board Meeting of the American Simmental Association will be held from August 30 to September 1. All the Fall Focus attendees are encouraged to stay and attend. This is an opportunity for all members to meet board members to share thoughts and exchange ideas.

The Fall Focus is FREE to attend and many meals are offered during the event so registration is required to help with planning.

Hotel information and a block room rate will be available closer to the event.

Watch for registration information on the website at [www.simmental.org](http://www.simmental.org) or in The Register or The SimTalk magazines.



**P&G Phenotype & GENOTYPE SHOW**

A PHENOTYPE & GENOTYPE SHOW WILL BE PILOTED AT THE 2026 AJSA REGIONAL CLASSICS.

**NEW IN 2026**

**GENERAL SHOW RULES**

Applies to the 2026 AJSA Regional Classics for complete details

Animals entered in the P&G Show will be judged using a system that combines both genotype-based phenotypic and observed phenotypic. The final results will be based on a composite score where genotype and phenotype are equally weighted.


There will be a P&G Show for only Purebred Simmental and Percentage Simmental/Hereford. There will be no separate breed or breed divisions.

The phenotype show is a no-frills event. Adhesives and paints may not be used.

Animals entered in the P&G Show may also be entered in the standard Progress Through Performance (PTP) Show.

To qualify for the P&G Show animals must have a DNA sample on file with AJSA at the time of entry and must have a 50% Simmental bloodline.

AMERICAN JUNIOR SIMMENTAL ASSOCIATION  
[www.junior.simmental.org](http://www.junior.simmental.org)



**2026 Annual ASA FALL FOCUS**

*Mark Your Calendar*

August 28–September 1, 2026 | Bozeman, Montana

**August 28**  
Local tours highlighting Montana's beef industry and ASA's headquarters

**August 29**  
Educational Symposium featuring industry experts

**Aug. 30–Sep. 1**  
Committee meetings & ASA Board Meeting

**SimGenetics**  
PROFIT THROUGH SCIENCE  
American Simmental Association

Co-hosted by the Montana Simmental Association

Visit [fallfocus.org](http://fallfocus.org) for more information.



# PROFIT THROUGH PERFORMANCE

## MARCH 1, 2026 SPENCER, SD *Production Sale*

Dedicated to your family, your program and your profitability.



PB SM

**TMAS H/F EPIC 8N | ASA: 4583980**  
Sire: OMF EPIC E27 | MGS: WINC MAHOMES 979G  
Homozygous Black | Homozygous Polled  
*A very high performance purebred herd sire prospect that checks a lot of boxes.*



3/4 SM

**WINC MATTER OF TIME 548N | ASA: 4611506**  
Sire: WINC MATTER OF TIME 249K | MGS: ES SURELOCK ZW15  
Homozygous Black | Homozygous Polled  
*Again in 2026, the WINC Matter of Time 249K sons will be very sought after.*



PB SM

**BLAG ALL RIGHT 510N | ASA: 4569606**  
Sire: WINC ALL RIGHT 213K | MGS: W/C EXECUTIVE ORDER 8543B  
Homozygous Black | Homozygous Polled  
*Both performance and maternal value come all inclusive with this next edition from the 705F donor.*



5/8 SM

**WINC REVOLUTION 210N | ASA: 4612576**  
Sire: W/C REVOLUTION 65G | MGS: REMINGTON LOCK N LOAD54U  
Homozygous Black | Homozygous Polled  
*There will be no lack of performance resulting from the service of this stockmen's delight.*



PB SM

**WINC HEAVY HITTER 547N | ASA: 4566459**  
Sire: RFS HEAVY HITTER H45 | MGS: W/C FORT KNOX 609F  
Homozygous Black | Homozygous Polled  
*A maternal brother to the \$147,500 WINC All Right 213K that packs a punch!*



PB SM

**WINC DAKOTA OUTLAW 538N | ASA: 4611501**  
Sire: KRJ DAKOTA OUTLAW G974 | MGS: WINC MAHOMES 979G  
Homozygous Black | Homozygous Polled  
*We are excited about several new sire groups to feature in 2026, there is quality deep through this set.*

*Windy Creek*  
Cattle Company

Jeremy, Bethany, Cash & Emerson Lehrman  
Jeremy: 605-530-5909 | Cash: 605-270-4848  
25064 432nd Ave. Spencer, SD 57374  
windycreek@triotel.net  
Scan the code to find us on Facebook!



With Guest Breeders  
Blagg Family &  
Hofer Farms

*Innovation*  
AgMarketing, LLC

Tim Anderson: (605) 682-9343  
Jered Shipman: (806) 983-7226  
Graham Blagg: (530) 913-6418  
InnovationAgMarketing.com

**DVAuction**  
*Streamlining Real Estate Auctions*





# LARGE SELECTION. GUARANTEED. VALUABLE.



**SCHOOLEY JACQUE 823J :: ASA 3908790**  
Eye appealing with high carass! He is prominent sire and maternal grandsire to many in the offering!



**GIBBS 9114G ESSENTIAL :: ASA 3716905**  
Large group of front end purebred sons of this multi-trait leading sire.



**CCR BEDROCK 5171J :: ASA 4028738**  
An outstanding set of percentage bulls in the offering by this easy fleshing, multi-use sire.



**3C Emerge 4004M :: ASA 4451567**  
2025 high selling bull purchased by ABS Global  
Look for his progeny born in the spring of 2026!



*55th Annual Production Sale* **AT THE RANCH, WESSINGTON, SD**

## FRIDAY, MARCH 20, 2026

*Offering 120+ Top Tier Simmental & SimAngus<sup>TM</sup> yearling bulls*

**NLC**  
**SIMMENTAL RANCH**

Rick, NaLani,  
NaLea, Chase, & Swayzee Dunsmore  
21830 372nd Ave., Wessington SD 57381  
Home: 605-458-2425 • Rick cell: 605-354-7523  
NaLani cell: 605-350-5216

**3C CHRISTENSEN RANCH**  
*Wessington, SD*

John & Carly Christensen  
Tyler, Cam, Law, Cecil & Kit Fagerhaug  
37273 216th St • Wessington SD 57381  
Home: 605-458-2218 • John Cell: 605-350-1278  
Tyler Cell: 605-280-1416 • Cam Cell: 605-350-2018