



South Dakota
SIMMEN TELLER & North Dakota
SIMMENTAL SCENE

January 2022

Happy New Year!

8TH ANNUAL HARTMAN CATTLE COMPANY



SIMMENTAL BULL SALE



FEBRUARY 6, 2022 | 2:00 PM | TECUMSEH, NE



LOT 2 | FRKG CRUSADER 356J
MR CCF 20-20 x HCCO COUNTESS 923G
ONC CATTLEMEN'S CONGRESS PEN OF FIVE MEMBER



LOT 4 | FRKG JUSTICE 113J
MR CCF 20-20 x HCCO COUNTESS 923G
ONC CATTLEMEN'S CONGRESS PEN OF FIVE MEMBER



LOT 7 | FRKG VICTORY 78J
MR CCF 20-20 x SWSN PANARAMA 900G
ONC CATTLEMEN'S CONGRESS PEN OF FIVE MEMBER



LOT 10 | SO SOUTHERN COMFORT 1J
SO REMEDY 7F x RED SUSPICION 1E
ELITE PRESENCE & STYLE



LOT 11 | EC NOBLE 283J
SO REMEDY 7F x DSFF COUNTESS 357D
MATERNAL BROTHER TO REBEL & RENEGADE!



LOT 12 | 4/B DYNAMO
SO REMEDY 7F x 4/B MISS PILGRIM 81B
THE REMEDY SIRE GROUP HAS MET OUR EXPECTATIONS!



LOT 29 | FRKG JOURNEY 71J
RUBY'S CURRENCY 7134E x VCL MISS 914G
THE HEAVIEST WEANING BULL OF THE OFFERING,
RAISED BY A TWO YEAR OLD!



LOT 40 | FRKG NEW FASHION 75J
EC REBEL 156F x HCCO COUNTESS 924G
FULL BROTHER TO THE \$225,000 HIGH SELLING HEIFER!



LOT 51 | STCC TECUMSEH 058J
VCL FORESIGHT x HF SERENA
THE NEXT GENERATION AI SIRE!

CATTLEMEN'S CONGRESS



Hartman Cattle Company
Mike Hartman (402) 440-6825
Dalton Hartman (402) 440-6469
HARTMANCATTLECO.COM



sale management by
INNOVATION
AgMarketing, LLC
Graham Blagg (530) 913-6418
Jered Shipman (806) 983-7226
Tim Anderson (605) 682-9343
INNOVATIONAGMARKETING.COM



www.NorthDakotaSimmental.com

Bryan Leapaldt, Leeds..... President
(701) 739-8764 bleapaldt@gmail.com

Kelly Hanson, Hannaford..... Vice President
(701) 789-1391 kelly.hanson@centralplainsag.net

Kim Myers, Kathryn Secretary/Treasurer
(701) 308-1018..... gkmyers@outlook.com

Wyatt Hansen, Ryder..... Director
(701) 720-4850..... wyattnhansen@gmail.com

Lyndon Hoiby, McGregor Director
(701) 641-1083..... hoibysim@nccray.com

Davis Kinn, Turtle Lake Director
(701) 400-5108..... dkinn10@hotmail.com

Jason Quandt, Oakes Director
(701) 710-0080 jason@quandtbrothers.com

Ethan Steffan, Killdeer Director
(701) 290-0371 ethansteffan@gmail.com

Derek Sys, Douglas..... Director
(701) 509-5870..... dj.sys@hotmail.com

Pat Thorson, Kindred Director
(701) 371-8230.. pat.thorson@westcentralag.com



www.SouthDakotaSimmental.com

Chris Effling, Highmore President
(605) 769-0142 .. ckeffling@venturecomm.net

Bridget Twedt, Beresford.. Vice President
(605) 777-5404 bridget.twedt@k12.sd.us

Kevin Blagg, Salem Treasurer
(605) 240-0015..... kblagg@firstdakota.com

Colton Buus, Canova Secretary
(605) 214-3532 colton.buus@gmail.com

Harley Cable, Pukwana Director
(605) 680-0845..... hdcable@midstatesd.net

Brett Tostenson, Highmore Director
(320) 226-3915 blacksandranch@gmail.com

Clay Duxbury, Miller..... Director
(605) 461-1494..... jackpotcattle@yahoo.com

Mike Thyen, Hayti Director
(605) 520-0575 tbirdlab@itctel.com

South Dakota SIMMENTELLER & North Dakota SIMMENTAL SCENE

Editor Tamra Heins, New Salem, ND
(701) 391-6431 · tamra@strategicconcepts.biz

Design Sheyna Strommen, Solen, ND
(701) 290-3886 · strommen@westriv.com

The following terms and conditions have been agreed on by the North Dakota & South Dakota Simmental Association's Board of Directors and the Publication Committee:

Advertising Space Rates

Size.....	4C
Full Page:	\$625
1/2.....	\$450
1/4 Page.....	\$250
Business Card.....	\$200/year

Advertising Deadlines

Issue.....	Deadline
February, 2022.....	Jan. 15, 2022
November, 2022.....	Oct. 15, 2022
January, 2023.....	Dec. 15, 2022

Terms: All advertising accounts are due and payable as invoiced. Interest charges of 1% per month will be assessed to accounts that are 30 days past due.

Delinquent Advertiser's Account: Advertisers knowingly and expressly agree and consent that, whenever accounts receivable for an advertiser have not been paid as of 90 days from date involved, advertising privileges will be suspended until full payment has been received.

Copy Changes: Alterations in advertising copy, if requested after closing dates, will be permitted only if time allows.

The North Dakota and South Dakota Simmental Associations and this publication reserve the right to refuse any advertising copy at our sole discretion. The North Dakota and South Dakota Simmental Associations and this publication assume no responsibility for the accuracy of the advertising content submitted. Advertisers assume all responsibility for the accuracy and truthfulness of submitted advertising containing pedigrees or statements regarding performance.

Editorial Content: Opinions expressed are those of the writer and not necessarily those of the North Dakota and South Dakota Simmental Associations or of this publication. Photographs and manuscripts are welcome, but no responsibility is assumed either while in transit or while in this office.

About the Cover: Winter feeding scene captured by Wade Staigle of Dakota XPress Simmental group, Center, ND.

LOOKING FORWARD...BY LOOKING BACK

*Scene/SimmenTeller Editor
Tamra Heins presents
awards at the North Dakota
Simmental Association
annual banquet.*



The Deckert family of Arena, N.D., was instrumental in Heins' early livestock showing career. Picture here are Orville (center), his son Justin (left) and grandson Jaxon Deckert.

Heins Sigh...

Happy New Year! January begins with things that I love, longer days (every extra minute gets us closer to summer) and the start of bull sale season. Sales have been very good and we are looking forward to that continuing into the new year. When looking forward, it only seems appropriate to look back.

If you attended the ND Simmental Association banquet, a lot of time was spent looking back as the association celebrated their 50th Anniversary. It was a great night with many people in attendance to celebrate the milestone. They even put me to work, handing out awards which prompted Erika Kenner to send me this text message: "Bet you never thought you'd be presenting awards at a Simmental banquet!!! Lol."

And while that might be true, I really didn't feel too out of place. After all, the Simmental breed in the Dakotas and I grew up together. I was raised on a registered Angus operation near Wing, ND and about 10 or so miles due South was a town called Arena. My parents decided that one way they thought they could build awareness of their genetics was through showing cattle. They wanted my brother and I to learn and luckily some of the best lived by Arena. We joined the Harriet Hustlers 4-H Club with the Deckert and Heidt families and started learning. (I believe the name was because of Harriet Township but I am not asking any questions) We spent many hours at the Deckert's practicing showmanship, clipping, asking a million questions and making a billion mistakes. I can remember losing a 4-H Showmanship contest to Mia Heidt who was a little older but way more experienced. I was in tears and she stopped to encourage me to keep working and keep showing at more events than just once a year. That was a long time ago, but I haven't forgotten her kind act and the message of keep practicing. It is a unique industry where people are willing to share their knowledge with others but still be so competitive. The Heidt and the Deckert family introduced us to a part of the industry I didn't know and we met so many great people. Many who have remained friends over the years and now their children are showing against mine and I couldn't be happier about that.

I was asked to take a picture of the three generations of Deckert Simmental at the banquet. I was happy to do so and thankful that this family and the Simmental breed were part of my upbringing. I look forward to the new year and the achievements of the next generations.

Enjoy the Day!

BREEDING FOR THE FUTURE

SELLING

55 Red & Black Simmental Bulls

24TH ANNUAL PRODUCTION SALE WEDNESDAY FEBRUARY 9TH, 2022 - 1PM

SALE LOCATION >>> **CB SALE FACILITY** 4 miles south of our ranch on 76th Ave, SE.



WS 12J = KRJ HZN DIRECT IMPACT F805
EPDs: CE: 15.3 BW: -0.5 WW: 92.3 YW: 139.1
MCE: 7.5 Milk: 28.9 MWW: 75
CW: 44.4 YG: -42 Marb: .46 BF: -.07 REA: 1.26
API: 173 TI: 99 // ASA #: 3912031



WS 9J = WS PROCLAMATION E202
EPDs: CE: 12.7 BW: -1 WW: 95.4 YW: 143.3
MCE: 8.5 Milk: 35.8 MWW: 83.4
CW: 47.2 YG: -33 Marb: .42 BF: -.07 REA: .99
API: 156 TI: 98 // ASA #: 3911994



WS 51J = RFS BULLETPROOF B42
EPDs: CE: 7.4 BW: 3.6 WW: 103.9 YW: 162.5
MCE: 5.3 Milk: 31.1 MWW: 83
CW: 59.1 YG: -4 Marb: .25 BF: -.08 REA: 1.25
API: 145 TI: 95 // ASA #: 3911843



WS 31J = KBHR QUICKLEY C154
EPDs: CE: 17.3 BW: -3.5 WW: 74.2 YW: 123
MCE: 8.7 Milk: 23.1 MWW: 60.2
CW: 39.6 YG: -34 Marb: .74 BF: -.07 REA: .91
API: 191 TI: 99 // ASA #: 3912014



WS 38J = HOOK'S EMPIRE 61E
EPDs: CE: 13.0 BW: -0.8 WW: 78 YW: 123.7
MCE: 7.6 Milk: 28.2 MWW: 67.2
CW: 38.1 YG: -33 Marb: .59 BF: -.06 REA: .92
API: 172 TI: 93 // ASA #: 3911897



WS 48J = HOOK'S FULL FIGURES 11F
EPDs: CE: 14.8 BW: -1.6 WW: 77.7 YW: 123.9
MCE: 8.3 Milk: 29.1 MWW: 67.9
CW: 40.5 YG: -39 Marb: .57 BF: -.05 REA: .123
API: 171 TI: 94 // ASA #: 3911952

Stay updated on sale pictures, videos and other
information by visiting our website!

WWW.WILKINSONFARMSSIMMENTALS.COM

Follow us on Facebook & Instagram - Wilkinson Farms Simmentals

Wilkinson Farms Simmentals

Terry & Cathy Schlenker Family • Montpelier, ND 58472

Aaron: 701-269-8271 • Terry: 701-320-2171

Cassia: 701-320-0374 • Jordan: 701-320-1895

ALLIED

GENETIC RESOURCES
Marty Ropp - 406-581-7835
www.alliedgeneticresources.com

Free sale will be broadcast live on the internet
DVAuction
Broadcasting Real Time Auctions
Real time bidding & proxy bidding available.
No hidden costs with DVAuction. www.dvauction.com

SD SIMMENTAL ASSOCIATION BANQUET AND AWARDS NIGHT

The South Dakota Simmental Association held their annual banquet on December 17th at the Ramada Inn, Mitchell, ND. Several awards were given during the evening as well as a silent auction held to benefit the SD Junior Simmental Association. The South Dakota Source sale was held the following day.



The South Dakota State Fair Champion Fitting Team was awarded to the SD Junior Simmental Association Team of Creighton Werning, Kenidey Effling and Kinsey Altana. Pictured left to right with their award jackets are Creighton Werning and Kenidey Effling. Not pictured was Kinsley Altana. Each contestant earned a spot by placing 1st in their age group in Showmanship at the SD Summer Spotlight. The South Dakota Jr Simmental Team has claimed this prize in 2020 and 2021 which speaks to the high caliber of the Juniors involved. Each participant received a windbreaker. Thank you to Dave Stout for continuing this tradition year after year.

Thank you to J&R Feeds to sponsoring the event and the \$1000 cash prize to the SDJSA .



SDSA Producer of the Year was awarded to Clay Duxbury.



SDSA Breeder of the Year was awarded to Traxinger Simmental, Mike and Terri Traxinger.



Talli Heim was awarded the Fallen Friends Buckle. The Fallen Friends Buckle is normally awarded at the SD State Fair Junior Simmental Association Special. The Champion Senior Showman receives the "Fallen Friends" belt buckle in honor of those past Simmental Supporters who are gone too soon. Since the Junior Beef Specials were not held this year the award was given at the banquet. Heim is a SD Junior Simmental Association member who has excelled in showmanship throughout her career. This individual has attended many Regional and National Classics. She has landed at the top in several showmanship competitions, participated in U-Fit-It and The Team Fitting Contest at the South Dakota State Fair. She is a role model and mentor for youth and her sisters.

HART SIMMENTALS

POWER BULL SALE

47th Annual Sale • Wednesday, February 16, 2022 • 1:00 PM

At the farm 2 miles south of Frederick, SD



**ALL CATTLE
GENOMIC
ENHANCED!**



HART STONE COLD 001J • 3896654 PB SM

Homo Black, Homo Polled Act BW: 70 Adj WW: 832
Hook's Black Hawk 50B x Koch Big Timber 685D
CE 15, BW -1.2, WW 90, YW 134, MCE 7, MILK 25, MWW 70, API 160, TI 94



HART CHEDDER 013J • 3896505 PB SM

Homo Black, Homo Polled Act BW: 71 Adj WW: 875
K-LER Franchise 804F x WHF Eclipse E35
CE 11, BW 1.5, WW 108, YW 162, MCE 6, MILK 27,
MWW 81, API 167, TI 107



HART BAYMAX 037J • 3896130 PB SM

Homo Black, Homo Polled Act BW: 74 Adj WW: 800
HSR Power Plus D206 x Hart Mega Watts 019C
CE 14, BW 1.8, WW 79, YW 114, MCE 10, MILK 34,
MWW 74, API 136, TI 78



HART SUMMIT 442J • 3896474 PB SM

Homo Black, Homo Polled Act BW: 90 Adj WW: 843
QB Last Frontier F42 x W/C Utah 534A
CE 10, BW 2.85, WW 73, YW 119, MCE 4, MILK 26,
MWW 63, API 133, TI 75



HEIFER

HART WANDA 334J • 3896310 PB SM

Homo Black, Homo Polled Act BW: 76 Adj WW: 709
LHT Main Force 184G x GLS Integrate Z3
CE 11, BW 1.3, WW 80, YW 121, MCE 5, MILK 19,
MWW 59, API 110, TI 74



HEIFER

HART COVER GIRL 141J • 3896312 PB SM

Homo Black, Homo Polled Pending Act BW: 74 Adj WW: 700
HSR Power Plus D206 x HL Rebel 435C
CE 10, BW .8, WW 73, YW 109, MCE 7, MILK 33,
MWW 69, API 136, TI 77

Bulls will be penned on display at the farm prior to and also sale day.

View full sale line up at
www.ebersale.com

This sale will be
broadcast live
on the internet

DVAuction
Broadcasting Real-Time Auctions



SALE MANAGEMENT:

EBERSPACHER ENTERPRISES INC.
507-532-6694 or Val 612-805-7405
sales@ebersale.com

For more info
or a catalog:

HART SIMMENTALS

Kerry, Mara, Justin, Jes & Jamie
4hooves@nvc.net • Frederick, SD

JUSTIN 605-216-6469
KERRY 605-252-2065

EPD
12/7/21

PLEASE JOIN US ON WEDNESDAY, FEBRUARY 16TH • OFFERING UP 90 GENOMIC ENHANCED POWER BULLS & ELITE HEIFERS

SD SIMMENTAL ASSOCIATION ANNOUNCES HEIFER GRANT AWARD WINNERS



SD Simmental Association Heifer Grant award recipients include, L to R: Taten Twedt, Cassandra Twedt, Jake Twedt, Teagon Moody and Chesney Fuks.

VanderWal
simmentals

PRIVATE TREATY BULL SALE



Genesis

RED, BLACK & BLAZED FACE BULLS
Simmentals, Black & Red SimAngus™ Bulls



Direct Impact

SIRES REPRESENTED:
BCLR Cash Flow
Caddilac
KRJ HZN Direct Impact
LBRS Genesis

VanderWal Simmentals
20758 464th Ave • Bruce, SD 57220
Dean: 605-627-5208 or 605-690-1901 or Kent 605-690-0234
vwbeef@hotmail.com

The SDJSA sponsored 13 \$500 heifer grants to SD juniors this year. Back row, left to right; Taten Twedt, Cassandra Twedt, Jade Twedt, Teagon Moody and Chesney Fuks. Front row, left to right; Evelyn Mark and Brooklyn Marshall. This grant is made possible by a special donation by Martin Trudeau Insurance. Juniors may use the grant towards any open or bred heifer at one of the state sales.

A special thank you to the following sponsors of our SDJSA Futurity:

- **Jimmi Rose Memorial, Harley and Dawn Cable.** A custom buckle was awarded to the Champion Purebred and Champion Percentage Futurity Heifer
- **Jackpot Cattle Company.** A custom belt buckle was awarded to the Champion Futurity Steer
- **Jordan Hamaan Memorial.** An embroidered chair was awarded to the Champion Purebred and Percentage Futurity Heifer as well as the Champion Futurity Simmental Steer

Have you purchased a heifer from a state sale or a steer from a SD breeder? You are eligible to be in the futurity show at SD summer Spotlight! Register at www.sdsimmental.com.

"Born in the Barn, Sold in the Barn" Sale

40th Annual Production Sale

Saturday, February 5, 2022

Selling 51 Yearling Simmental & SimAngus™ Bulls
14 Bred Registered Heifers
11 Open Registered Heifers

1 p.m. CST
At the Ranch
Ruso, ND

Auctioneer:
Dustin Carter



API TI
145.3 89.1

KSR BIG MO 572J

Black 5/8 SM 3/8 AN Polled • 2/23/21 • 95 lbs • 839 lbs
CCR COWBOY CUT 5048Z x S A V FINAL ANSWER 0035
CE BW WW YW MCE MM MW CW YG MB
11.5 2.5 98.0 143.8 7.8 25.6 74.6 37.4 -0.20 0.34



API TI
134.4 85.9

KSR FALCON 205J

Black 3/4 SM 1/8 AN 1/8 MX Polled • 2/25/21 • 100 lbs • 764 lbs
HOOK'S EAGLE 6E x SS PREFERRED VALUE R901
CE BW WW YW MCE MM MW CW YG MB
8.9 2.5 92.1 138.0 3.1 25.8 71.8 41.3 -0.35 0.33



API TI
124.9 76.7

KSR RED KING 435J

Red PB SM Polled • 2/25/21 • 91 lbs • 672 lbs
KLSR RED NATION C545 x WS SOLOMAN X186
CE BW WW YW MCE MM MW CW YG MB
8.9 2.2 80.9 109.9 4.3 23.9 64.3 26.0 -0.41 0.88



API TI
119.7 84.5

KSR MCLINTOCK 548J

Black PB SM Polled • 2/27/21 • 93 lbs • 777 lbs
KRJ DAKOTA OUTLAW G974 x KOCH LC MONTE 803U
CE BW WW YW MCE MM MW CW YG MB
5.5 4.9 97.7 151.9 2.8 24.4 73.2 36.9 -0.56 0.06



API TI
125.8 85.1

KSR HICKOK 596J

Black 3/4 SM 1/4 AN Polled • 2/26/21 • 88 lbs • 772 lbs
KRJ DAKOTA OUTLAW G974 x S A V FINAL ANSWER 0035
CE BW WW YW MCE MM MW CW YG MB
8.4 2.6 95.6 149.2 1.6 26.3 74.5 33.7 -0.38 0.18

DVAuction Broadcasting Real-time Auctions

Visit our website at:
klainsimmentalranch.com

Follow us:

Open House Bull Viewing
January 28, 29 and 30
11 am. to 4 pm. each day

EPD as of 12-5-21



KLAIN SIMMENTAL RANCH

Durnell, Darcy and Trey Klain • Tyler and Carrie Klain • Dalyce and Adam Balk
(701) 448-2408 • 1364 20th St NW • Ruso, ND 58778

50 Years Performance Testing

50

Anniversary
CELEBRATING

ND SIMMENTAL ASSOC. CELEBRATES 50 YEARS AT ANNUAL BANQUET

The ND Simmental Association gathered at the Ramkota Hotel on December 10th for their annual banquet and to celebrate the association's 50th anniversary. The banquet is held in conjunction with the ND State Sale.

The celebration brought a large crowd to the banquet to celebrate and reminisce about the Simmental breed in North Dakota. A table full of past memories sparked many conversations by all ages about the breed and the changes it has made throughout its history.

Many awards were given, as the banquet was canceled in 2020 due to the pandemic. A Junior auction was held as well as Simmental Trivia with moderator, Kevin Hansen. The evening ended with the auction for the prime pages for the upcoming ND Simmental Directory.



Above: Past Presidents of the ND Simmental Association gathered for the 50th Anniversary of the ND Simmental Association. In attendance were back row, left to right: Bryan Leapaltd, Dan Thompson, Joe Bata, Dave Doll, JR Aufforth, Claye Kaelberer, Tom Anderson, Wade Staigle. Seated Front Row, left to right, Todd Finke, Tim Clark, Kelly Hanson, Roger Finke, Orville Deckert, Dusty Kunkel, Roger Kenner and Erika Kenner.



Left: The ND Simmental Association Board of Directors includes, back row, left to right: Jason Quandt, Bryan Leapaltd, Ethan Steffan, Lyndon Hoiby and Davis Kinn. Front row, left to right; Kim Myers, Kelly Hanson, Wyatt Hansen and Derek Sys. Not pictured is Pat Thoreson.

Performance Simmental Bull Sale

SELLING 80 SIMMENTAL & SIMANGUS™ BULLS

FEBRUARY 11, 2022 @ RUGBY LIVESTOCK AUCTION @ 1:00 PM CST

DVAuction
Broadcasting Real Time Auctions

BATA BROTHERS



JOE, MARK & CHRIS BATA
6322 HWY 35 ADAMS, ND
J: 701-331-0344 M: 701-331-3055
JPBATA@POLARCOMM.COM

8 SELLING BRED HEIFERS TOO!



BBS J1 API: 113.6 ~ TI: 88.8

2 8 114.5 172.6 .36 2.2 38.5 95.7
SKORS Blackjack X MLC Mr. Justice
(3950228) ~ PB SM ~ ADJ WW: 918 BW: 112



BBS J63 API: 156.7 ~ TI: 96.3

12.9 1.3 102.7 161.5 .37 9.2 27.9 79.2
TT Golden X LFE The Riddler
(3950265) ~ PB SM ~ ADJ WW: 902 ~ BW: 87



BBS J15 API: 136.4 ~ TI: 93.2

5 3.6 102.7 151 .30 2 33.4 84.7
BCLR Manifesto X RF Red Absolute
(3950237) ~ PB SM ~ ADJ WW: 859 ~ BW: 91



BBS J75 API: 128.3 ~ TI: 86.5

8.7 3.3 98 150 .32 6.2 30 79
SKORS Blackjack X LFE The Riddler
(3950273) ~ PB SM ~ ADJ WW: 836 ~ BW: 94



BELL J37 API: 136.8 ~ TI: 80.9

10 3.8 87.3 130.8 0.27 6.9 23.1 66.7
Bounty Hunter X Cowboy Cut
3944332 ~ PB SM ~ ADJ WW: 798 BW: 92

2 YR Old's for Sale!



BELL SIMMENTALS



TRAVIS BELL
FORDVILLE, ND
701-360-1597
TBELL@POLARCOMM.COM

EPD's 12/13/21 ~ CE BW WW YW ADG MCE MILK MWW



BELL J4 API: 141.9 ~ TI: 89.6

13.6 0.2 89.7 130 25 9.1 30.6 75.6
WS Proclamation X CCF Vision
3985537 ~ PB SM ~ ADJ WW: 903 ~ BW: 88



BELL 25 API: 112.7 ~ TI: 65.5

9.3 1.5 59.4 86.2 0.17 4.8 26.6 56.3
Red Express X KWA Red Mountain
3944287 ~ PB SM ~ ADJ WW: 617 ~ BW: 75



BELL J22 API: 120.5 ~ TI: 77.2

8.9 2.0 86.2 131 .28 5 26.3 69.3
SVS Delta X MRL Bomber
3944268 ~ PB SM ~ ADJ WW: 771 ~ BW: 72



JR Aufforth was awarded this plaque in recognition of his service to the ND Simmental Association by serving on the Board of Directors. Presenting the award is current NDSA President Bryan Leapaldt. Also recognized for his service was Doug Bichler. Bichler also served on the on the NDSA Board of Directors but was unable to attend the banquet.



Tom and Tammy Bernhardt were presented this award by current NDSA president Bryan Leapaldt.

BERNHARDTS RECEIVE COMMERCIAL CATTLEMEN AWARD

This year's commercial cattlemen award goes to the Tom and Tamie Bernhardt family.

Tom got his start in the cattle business working alongside his father raising horned Herefords. It was in college that Tom was introduced to Simmental cattle with a class visit to Orville Deckert's ranch. Tom purchased his first set of commercial bred heifers in 1982 and started using Simmental bulls shortly thereafter.

In October of 1983, Tom married Tamie and together they have built their farm and cowherd. They have 5 children who

are all married and grandchildren have now become a part of the scenery at the Bernhardt ranch. Their entire family has always been involved in daily chores and farm-work. You will often

"Fleshing ability and udder quality are very important. Simmentals just seem to do that."

- Tom Bernhardt

see Tamie by Tom's side at bull sales as they select their new herd-sires. They have always had a keen eye for good cattle.

Over the years Tom has tried different breeds, but has found Simmental to be unmatched for docility, milk, and mothering ability. The mother cow is the cornerstone of their program. They retain their own replacement heifers and Tom has utilized AI in his homegrown heifers. Tom says that "fleshing ability and udder quality are very important. Simmentals just seem to do that."

Bernhardts work alongside their son who has returned to the ranch. Tom's love of cattle has been passed down to Austin who is expanding his own cowherd. The Bernhardts have always had red cattle with the exception of one black cow whom the grandkids have quickly claimed as their own.



Lynette and Kevin Thompson (center and right) of TNT Simmentals were presented the Golden Book award by ASA Board of Director, Tim Clark (left).



Bill and Colleen Larson of Larson's XL Simmentals were presented this award by NDSA past president, Dave Doll.

50
Anniversary
CELEBRATING

POWER & GROWTH

Calving Ease



76J

ASA# 3925037 • CLSR Guardian X Kappes Trail
3/4 Blood • Homo Polled • Homo Black

Maternal & Carcass Traits

Annual Production Sale
Feb. 19, 2022
At the Ranch, Turtle Lake

Selling
45

Red & Black Simmental &
SimInfluenced Yearling Bulls

**20 Open Females &
THE ELITE EIGHT**
4 Elite Breds • 4 Elite Opens



647J

ASA# 3924971 • SAV Rainfall X Bozeman
1/2 Blood • Homo Polled • Homo Black



752J

ASA# 3924917 • TJ Franchise X SAV Bruiser
1/2 Blood • Homo Polled • Homo Black



845J

ASA# 3924945 • Hometown X Sirloin
3/4 Blood • Homo Polled



215J

ASA# 3924940 • Cowboy Logic X Shear Force
Purebred • Homo Polled



672J

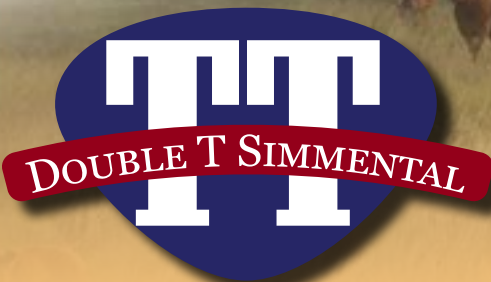
ASA# 3925051 • Hook's Eagle X GAR Progress
5/8 Blood • Homo Black • 4 Full Brothers Sell!



681J

ASA# 3924967 • TJ Gold X TT Cooper
Purebred • Homo Polled

7 Baldies Sell!



Tim & Tam Clark • Ranch: (701) 448-2815
Tim Cell: (701) 799-7752 • Tam Cell: (701) 315-0032

www.DoubleTSimmentals.com

Stop by anytime to see the cattle! ~ Turtle Lake, ND

ND SIMMENTAL JUNIORS RECOGNIZED AT 50TH ANNIVERSARY



Kim Myers, Secretary/Treasurer of the NDSA presents one of the Outstanding Junior Award to Kayla Schaefer.

Jen Sys, ND Junior Simmental Association Advisor awarded Bailey Samuelson an award sweatshirt for being one of the Outstanding Juniors. Other Outstanding Junior Award Winners that were recognized but weren't able to attend were Fletcher Hennessey and Taylor Miller.



Jen Sys, ND Junior Simmental Association Advisor awarded Bailey Samuelson an award sweatshirt for being one of the Outstanding Juniors. Other Outstanding Junior Award Winners that were recognized but weren't able to attend were Fletcher Hennessey and Taylor Miller.

50
Anniversary
CELEBRATING



The Coloring Contest participants were really excited about coloring their pictures...not nearly as excited to sit still for the photo. There is a lot of youthful enthusiasm in the ND Simmental industry.

NEW SALE LOCATION! THE RANCH • 10752 BIA ROAD 15, VEBLLEN, SD

22nd Annual ★ ★ ★ ★
KING OF THE RANGE
PRODUCTION SALE

Sale location: Once in Veblen, turn South on Laframboise Street. This will turn into BIA Road 15. Follow for 3 miles. Our ranch will be on the East side of the road. Please note, there are a lot of minimum maintenance roads around the ranch and GPS could take you down them if you are not familiar with the area. Please call if directions are needed.

**THURSDAY,
 FEBRUARY 3, 2022**

1:00 P.M. CST • At the Ranch • 10752 BIA Road 15, Veblen, SD

Selling 110 Simmental Bulls
— 85 Black & 25 Red —
& 10-15 Bred Heifers



STAV PIPELINE



GB/SAS RED VIPER



STAV/MAF PANDEMIC



MR NLC CASH VALUE

**OTHER SIRES
 REPRESENTED:**

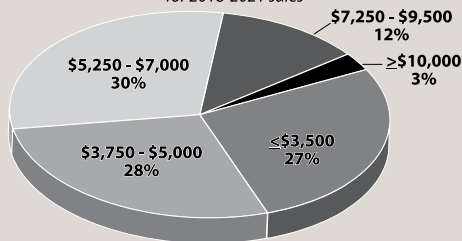
- W/C DOCTORS ORDER
- SKORS HIGH ROLLER
- WS CERTIFIED
- HOOK'S EAGLE
- HHS BOBBY
- TJ CROSSFIT
- STAV GRANDSTAND
- HLTS CAPT. AMERICA



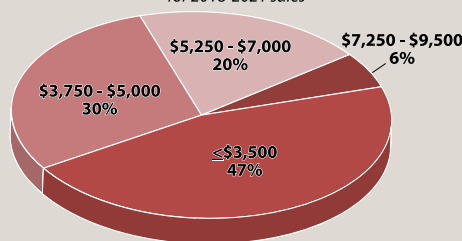
STAV KINGPIN

**COMMERCIALLY PRICED,
 NO NONSENSE QUALITY CATTLE!**

Black Bull Price Average
 for 2018-2021 sales



Red Bull Price Average
 for 2018-2021 sales



**VISIT THE RANCH
 PRIOR TO SALE DAY
 AND RECEIVE A**

\$100

DISCOUNT

ON YOUR PURCHASE!

STAVICK SIMMENTAL

S Mike, Myra and Owen Stavick • Liv and Gordon Holt
 10752 BIA Road 15, Veblen, SD
 605-237-4663 (Mike) • 605-551-9016 (Owen)
 stavickx@tnics.com • stavicksimmental.com



HANSENS NAMED PROMOTER OF THE YEAR

Presented and written by Davis Kinn

I would like everyone to think for a moment and ask themselves, what does it truly mean to “Promote”?

I found a definition that represents a common goal for all of us.

To promote is to further the progress of something, especially a cause, venture or aim.

This year’s recipient checks off all of those boxes and does it wearing a slightly tipped hat and a contagious smile.

This family has always been inviting and enthusiastic to everyone they meet.

They will always be the first to say hello and shake your hand.

I would like to give you a quick history of how they got started with the Simmental breed.

The first Simmental bull was bought in 1979 from Bob Tollefson of Makoti.

That spring the bull was turned out with a horned Hereford based set of commercial cows.

The spring of 1980 was the first set of half-blood calves that were born on the ranch.

The performance, added growth, and



the extra shot of heterosis in that set of calves really impressed everyone.

As straight bred Hereford calves were getting harder to market, the Simmental genetics were looking to be a great cross for those cows.

When the first half blood cows were put into production and began raising calves they saw even more performance with the three quarter blood calves.

They bought the first registered heifer, again from Bob Tollefson, in 1982.

After buying that heifer they decided to join the American Simmental Association in 1983.

That same year they implemented artificial insemination into the program where they were able to select from the best Simmental bulls to help progress

their herd’s genetics as fast as possible.

Some of the first bulls they bred to were Alpine Polled Proto, Lightning, Hercules, Double Time, and Signal.

In the late 80s and early 90s they clipped and showed cattle at the Valley City Winter Show and the Crookston Stock Show for Roger Kenner, Paul Klevan, and Dan & Diane Thompson.

They first consigned cattle to the North Dakota State Simmental Sale in 1992 and have continued to do so since then missing very few sales.

In the early years they marketed bull’s private treaty, through the Northwest Select Simmental Sale, Agri International in Bismarck, and the

...Continued on page 18



Simmental

Our past, present & future!

We have nearly 90 years of combined expertise in breeding Simmental cattle that will leave a positive impact on your herds now and into the future!

Annual Production Sale

Friday, Feb. 18, 2022

Kist Livestock, Mandan, ND 1 p.m.

130 Bulls and 50 Bred Heifers



Wade Staigle Family (701) 226-6464 Kevin Hansen Family (701) 720-6551

www.dakotaxpress.com



Find us on Facebook!



Hansen Simmental, Kevin and Liz Hansen accepting the award on behalf of Hansen Simmental presented by Davis Kinn.

"We are resilient and there aren't too many things that are going to get us down..."

- Kevin Hansen

ND Simmental Association celebrates 50 years, continued from page 16

KMOT Ag Expo.

In 2005 they joined forces with the Staigle, Deckert, and the Pelton families starting the first Dakota Xpress bull and female sale.

They continue today to market their genetics annually with the Staigle family in the Dakota Xpress Sale.

They feel the biggest change that the breed has accomplished from the early days till now is taking the spots off, making the cattle almost entirely solid colored.

The second biggest stride forward for the breed was bringing the frame score down to a more usable size.

Those early cattle were very extreme in frame with a minimal center body mass which in turn made them harder to keep weight on and also harder to breed back.

They believe that the cattle being bred today are much easier fleshing and more moderate framed while still having plenty of performance.

With these traits, everyone along the chain from the cow/calf producer all the way up to the packers are reaping the benefits and rewards of the Simmental Breed.

The genetics they select to use in their program are required to have a balanced set of Epd's, be good structured, and have good udder and teat quality.

They must also have the correct physical look with added muscling and a

bold sweeping rib shape.

In addition to being a member of the American Simmental Association and North Dakota Simmental Association, they are also members of the Rose Valley Church board, Vang Township board, a past member of the Lewis and Clark School Board and a past 4-H Leaders.

They are a 25 year member the North Dakota Stockmen's Association and currently have a member serving as an elected Director from District 6.

Multiple members of this family have served numerous terms on the North Dakota Simmental Association Board.

They were interviewed by the local news this past July discussing the drought that we were all dealing with.

They kept the discussion very correct and to the point in a message about all the obstacles that ranchers were facing.

The interview was confidently ended in reference to ranchers by saying, "We are resilient and there aren't too many things that are going to get us down.

We have been through a lot of weather before and we are going to come out on top again.

They are a leader and great example of how to promote what we all love, Simmental cattle, ranching, and the entire agricultural industry in its simplest and purest form.

I am honored to announce this year's recipient of the North Dakota State Simmental Association Promoter of the Year is Kevin and Liz Hansen of the Hansen Simmental Ranch of Ryder, ND.

TRAXINGER

Simmental

Save the Date!

FEBRUARY 9, 2022

1 p.m. • At the Ranch • Houghton, SD

50 Simmental & SimAngus™ Bulls



COLORADO BRIDLE BIT • ASA#: 3271382

Contact Traxinger Simmental or
Thomas Livestock (406) 581-8859

Featuring sons of

COLORADO BRIDLE BIT
BRIDLE BIT RED ROCK
KS LITTLE JOHN C85
RODE POWER HOUSE

TRAXS RED RIVER
WS ALL ABOARD
BCLR MANIFESTO
AND MORE.



BRIDLE BIT RED ROCK • ASA#: 3560970

Contact Traxinger Simmental or
Thomas Livestock (406) 581-8859



KS LITTLE JOHN C85 • ASA#: 2977404

Contact Traxinger Simmental or
Thomas Livestock (406) 581-8859

Contact us for a catalog or more information!

MIKE & TERRI TRAXINGER • 605-294-7227

MICHAEL TRAXINGER • 605-377-4110



E-mail: mtrax@nvc.net

www.TraxingerSimmental.com

DVAuction

IGS CARCASS EPD UPDATES

Reprinted with permission from the American Simmental Association Website.

by Randie Culbertson, PhD

Carcass records on terminal cattle remain rare and highly sought-after phenotypes for National Cattle Evaluation. As the number of carcass phenotypes are limited in the National Cattle Evaluation, IGS uses breed

effects from the USDA Meat Animal Research Center to adjust genetic predictions for various breeds. Programs like the Carcass Merit Program and Carcass Expansion Program are adding

valuable terminal records and genomic information to the genetic evaluation.

As with any trait under selection, breed effects will change over time. As a result, US-MARC updates their breed effects annually and the IGS Multi-breed Genetic Evaluation recently updated the breed effects in the published EPDs (as of 12/20/21). The implementation of these updated breed effects caused some changes in carcass EPDs. The adjustments are set to an Angus base and are applied depending on the breed percent of the animal. When comparing the rank of bulls with a high percent of a breed, breeders may see a shift in the EPD value but the bulls still have the same rank among other bulls with the same breed percentage. However, reranking occurred when comparing one breed to another as well as different percentage composites.

An ongoing challenge of estimating carcass EPDs is the lack of carcass phenotypes. This lack of phenotypes creates a real challenge for the genetic evaluation to appropriately account for breed differences. With traits that have limited records and breed comparisons within contemporary groups, using field data (i.e. IGS data) can lead to unreliable estimation of breed effects. In those

cases, breed effects from scientific literature are often used. The advantage of using breed effects from literature is that the effects are derived from “clean” data and often from herds with breeding systems designed specifically to obtain these breed effects. In the case of carcass trait breed differences, the IGS Multi-breed Genetic Evaluation uses the breed effects derived from US-MARC.



SIM FLECKVIEH CATTLE

JEFF SORENSON
Garretson, South Dakota
sorenson@augie.edu | 605-359-8728
www.smfleckvieh.com

SIRES OF OUR 2022 SALE BULLS

FGAF Granger 060G

Sibelle Arthur 39B

**YEARLING BULLS FOR SALE BY PRIVATE TREATY
SEMEN IS AVAILABLE ON THESE SIRES
PLEASE SEE OUR WEBSITE FOR MORE INFORMATION**

www.smfleckvieh.com

The genetics worth waiting for!

KELLER BROKEN HEART RANCH

Thursday,
March 3, 2022

1:00 p.m., At the Ranch, Mandan, ND

SELLING 200 HEAD

**120 High-Performance Red & Black
Simmental & SimAngus™ Bulls and 80 Red
& Black Simmental & SimAngus™ Heifers**



J140 - Reg# 3943852

Purebred - Homo Black/Polled
CLRS GUARDIAN 317G x WS MISS SUGAR C4
CE 16 BW -2.1 WW 97 YW 149 MCE 10
M 33 MWW 81 **API 195 TI 113**



J071 - Reg# 3943783

1/2 SM - Homo Black
G A R HOME TOWN x KBHR MEDORA G132
CE 20 BW -2.2 WW 87 YW 144 MCE 14
M 25 MWW 69 **API 195 TI 110**



J105 - Reg# 3943817

Purebred - Homo Black/Polled
HOOK'S BEACON 56B x WS MISS SUGAR C4
CE 16 BW -2.0 WW 88 YW 136 MCE 11
M 32 MWW 76 **API 187 TI 105**



J130 - Reg# 3943842

Purebred - Homo Polled
MR SR RED OCTOBER G1761 x WS ELECTRA E88
CE 18 BW -3.0 WW 80 YW 124 MCE 10
M 29 MWW 69 **API 193 TI 100**



J138 - Reg# 3943850

Purebred - Homo Black/Polled
WS PROCLAMATION E202 x BAR CK MS X38 106Z
CE 17 BW -2.2 WW 79 YW 119 MCE 12
M 31 MWW 71 **API 184 TI 100**



J160 - Reg # 3943872

Purebred - Homo Black/Polled
HHS MR 847D x WS MISS SUGAR C4
CE 11 BW 0.5 WW 90 YW 144 MCE 7
M 29 MWW 74 **API 173 TI 101**



J255 - Reg# 3943967

Purebred - Homo Polled
MR SR RED OCTOBER G1761 x KBHR C078
CE 13 BW 0.7 WW 87 YW 138 MCE 7
M 29 MWW 73 **API 170 TI 98**



J177 - Reg# 3943889

Purebred - Homo Black/Polled
LCDR IMPACT 134F x KBHR MEDORA G132
CE 11 BW 1.6 WW 102 YW 166 MCE 7
M 30 MWW 81 **API 165 TI 105**



J203 - Reg# 3943915

Purebred - Homo Black/Polled
LBRS GENESIS G69 x KBHR MEDORA G132
CE 14 BW -0.1 WW 94 YW 148 MCE 9
M 29 MWW 77 **API 182 TI 105**

Dwight, Susan & Jake Keller — Luke & Katy Keller — Tessa & Thomas Osterbauer

701-471-5215 Dwight • 701-471-1142 Luke • 701-471-5065 Jake • 701-445-7350 Home

1573 55th St., Mandan, ND 58554 • kbhr@westriv.com • www.kbhrsimmental.com





AM I FULL OF CRAP?

Calf scours are not inevitable. A strong prevention program is non-negotiable. Dependable scour prevention is essential for calf welfare, employee morale and business profitability. The immune system's response to vaccination is variable and unpredictable. That's why giving preformed antibodies instead of relying on a vaccine to stimulate antibody production is so important. I'm all for removing uncertainties. So yes, I stand by this product. (And no, I'm not.)

Learn more at
FirstDefenseCalfHealth.com

Marissa Hake, DVM
Calf Vet

© 2020 ImmuCell Corporation. All Rights Reserved.



THE BEST VACCINE FOR SCOURS,
ISN'T A VACCINE.



41st Annual

GOEKEN CATTLE

NEW EARLIER DATE!

BULL SALE

MONDAY, JANUARY 31, 2022 • 1:00 PM

Lesterville Community Center • Lesterville, SD

Come early sale day to **view the bulls at the ranch** then join us for **lunch and bull auction at the community center!**



C46 • PB Simmental • BW 94lbs
W/C Bankroll x JMG Miss Imperial 533C



508 • 3/4 Simmental • BW 84 lbs
SAS Antidote x JMG Miss Sharper Image 508



6223 • PB Simmental • BW 86 lbs
WS Jackson x JMG Miss Regard 6223



7204 • 3/4 Simmental • BW 90
WSJ Twenty - Twenty x JMG Miss Bankroll 7204



5108 • PB Simmental • BW 88lbs.
SAS Antidote x JMG Miss Bankroll 5108



534 • PB Simmental • BW 84 lbs
WS Jackson x JMG Miss Gunslinger 534



761 • PB Angus • BW 86
RCL Balboa x JMG Miss Balboa 761



7146 • PB Angus • BW 74 lbs.
SAV Rainfall x JMG Miss Brilliance 7146



714 • PB Angus • BW 86 lbs.
RCL Balboa x Ponca Creek Ethelda E 714

SELLING 70 STRONG AGE 18 MONTH BULLS

SIMMENTAL • SIMANGUS • PB ANGUS

STRES SAS Antidote, W/C Bankroll, WS Jackson, WSJ Twenty-Twenty, Erixon Bitten, JMG Voyager, JMG Viper, RCL Balboa, SAV Rainfall, RCL Brilliance

WELCOME TO VIEW THE BULLS ANYTIME AT THE RANCH.

JOHN & SUSAN GOEKEN



30139 435TH AVE., UTICA, SD 57067
JOHN 605-364-7432 • NATHAN 605-660-9626
ADAM 605-760-6040 • AARON 605-660-4301
goekencattle@goldenwest.net

Auctioneer: Dan Koupal 605-491-1331



A SAMPLE OF OUR 2020 BULLS PICTURED



LaBatte Simmentals 42nd Annual BULL SALE

WITH GUEST EAST POPLAR SIMMENTALS

80 Red, Black and Fullblood Bulls, 15 Open Heifers

Johnstone Auction Mart, Moose Jaw, SK

FRIDAY, MARCH 4, 2022

Our Breeding Philosophy:

FUNCTIONAL
Productive
PROFITABLE

SEMEN TESTED • FREE WINTERING • FREE DELIVERY

EAST POPLAR

Simmentals

LaBatte Simmentals



Kyron and Kelsey Manske

Box 456, Coronach, SK, S0H 020

Phone: 306-267-7530

Email: east.poplar@hotmail.com

Barry & Brenda LaBatte | Lynlee & Hayley LaBatte and Boys

Box 72, Gladmar, SK, S0C 1A0

Barry's Cell: 306-815-7900 | Brodyn's Cell: 306-815-7804

labatte.simm@sasktel.net | www.LaBatteSimmentals.com

ES Eichacker Simmentals

With Guest Breeder:
JK ANGUS

Friday, March 4th at 1:00 PM
at the Farm, Salem, SD

Annual Production Sale 2022



ES JG150 PB SM
TJ GOLD x WS PROCLAMATION

ES JA110-4
PB SM
LCDR
PROGRESSIVE x
REMINGTON LOCK
N LOAD 54U

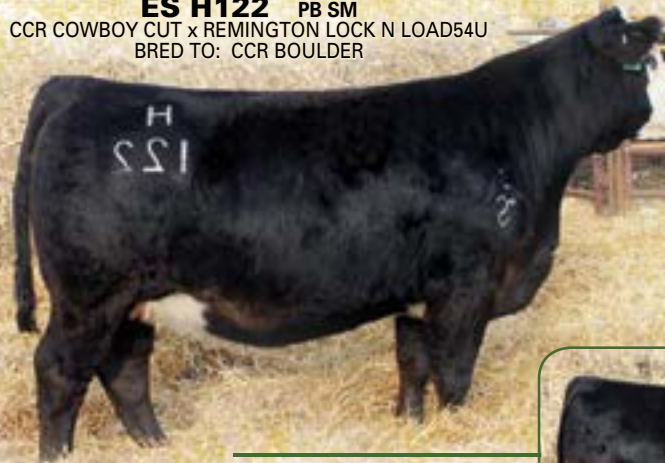


ES JZ33 PB SM
RUBYS TURNPIKE 771E x
REMINGTON LOCK N LOAD 54U



ES JD55-2 3/4 SM 1/8 AN 1/8 AR
W/C FORT KNOX x CDI AUTHORITY 77X

ES H122 PB SM
CCR COWBOY CUT x REMINGTON LOCK N LOAD54U
BRED TO: CCR BOULDER



ES H57
3/4 SM 1/4 AN
ES EX75-1 x
WS BEEF KING
W107
BRED TO THSF
LOVER BOY



ES H102 5/8 SM 3/8 AN
TJ TEARDROP 783F x CONNEALY FINAL PRODUCT
BRED TO EGL CINCHED



ES H67 1/2 SM 7/16 AR 1/16 AN
LEACHMAN CADILLAC L025A x
WS BEEF KING W107
BRED TO HSF CARDINAL

100+ BULLS &
40 PAIRS & BRED FEMALES
SIMMENTAL & SIMANGUS™, SIM/RED ANGUS,
ANGUS & RED ANGUS



Guest Breeder: JK Angus 605-940-5104



Sale Managers: Eberspacher Enterprises 507-532-6694
Val Cell 612-805-7405 • sales@ebersale.com
Catalog will be online at www.ebersale.com

ES Eichacker Simmentals

Steve & Cathy Eichacker
Home 605-425-2391 • Cell 605-421-1152
Salem, SD

REIMER AWARDED ASA'S HIGHEST HONOR

2021 Golden Book Winners Recognized

By Dan Rieder Reprinted with permission from American Simmental Association Website

Three men, all of whom served on the ASA Board of Trustees including terms as Board Chairman, are honored with ASA's highest award.

Steve Reimer, Chamberlain, South Dakota - Steady Leadership

Voluntary service on behalf of his chosen breed has been a long-time hallmark of Steve Reimer. Not only did he spend six years on the ASA Board from 1991-1996, including a year as Board Chairman in 1995, but he also served 12 years on the South Dakota State Association over two separate six-year spans.

R&R Cattle Company, operated by Reimer and his father, Bill, is among the Simmental operations that date back to the early 1970s, holding membership number 3969. The multi-generation ranch was originally established around a set of Hereford cows, by Steve's great-grandfather.

A much-in-demand cattle judge, he has worked most of the major cattle shows in the US. As an exhibitor, R&R ranch dominated the champion pen of three bulls over the course of many years in the yards at the National Western Stock Show in Denver. The Black Hills Stock Show in Rapid City was also the scene of considerable success by R&R Cattle. When Steve's children were old enough to compete in 4-H and junior shows, the Brule County contingent was tough to beat and always led by the Reimers.

As a board member, Reimer served during turbulent times for the Association, yet through it all, especially during his tenure as Board Chairman, he met the challenge with integrity and courage when the Simmental membership was desperately seeking responsible leadership. His steady hand and unwavering resolve guided the ASA December '20/January '21 / Register 23 through rough waters. In mid-1996, he had significant influence in the hiring of

Jerry Lipsey to serve as the Association's fifth chief executive officer.

His involvement in the innovative FOCUS 2000 conference in 1992 was a key turning point in bringing the commercial cattle industry and market share to the Simmental breed. Reimer's breeding philosophy revolves around placing selection pressure on both phenotype and genotype. With that foundation for his thinking, he was instrumental in helping to create the Progress Thorough Performance (PTP) show format still being used 25 years later by the ASA.

The Reimer operation also includes significant cash crops from corn to soybeans to wheat and forage oats in a crop rotation with turnips, radishes, and lentils, using an innovative no-till and cover crop mix. Reimer and his wife, Elaine, are the parents of two daughters, a son, and five grandchildren.

Also recognized were Gordon Hodges, Hamptonville, North Carolina, and Fred Schuetze, Granbury, TX.

...Continued on page 52.



TNT SIMMENTALS

37TH ANNUAL "CARRYING ON" THE EXPLOSIVE DIFFERENCE SALE

Friday, FEBRUARY 11, 2022

1 p.m. CST • NEW LOCATION at the Erbele Ranch, Lehr, ND

Your **COMMERCIAL BULL HEADQUARTERS**, along with **BREED-LEADING HERDSIRES!**

They are **THICK and DEEP** – All backed by the **TNT 100% GUARANTEE!**

DVAuction Broadcasting Real-time Auctions

Selling
110 Bulls

Purebred Black Sim
3/4, 1/2 & 1/4
SimAngus™

Purebred Red Sim
3/4, 1/2 & 1/4
SimAngus™

Purebred
Red Angus



Gibbs 7382E Broad Range x Herbster West River 5158



Gibbs 7056E Southern Comfort x TNT Tanker U263



Gibbs 7382E Broad Range x TNT BCR Unified B203



TNT Defender F405 x TNT Tannerite 6369



IR Imperial D948 x WS Prime Time 66



RFS Bulletproof B42 x TNT Whisky River B298



Tehama Tahoe B767 x TNT Superior X358



TNT Convergence F360 x Herbster West River 5158



Gibbs 7056E Southern Comfort x S D S Nightride 6110

TNT SIMMENTAL RANCH

Shanon & Gabe Erbele

6471 51st Ave SE • Lehr, ND 58460

(701) 527-5885 (Shanon's cell)

(701) 426-9445 (Gabe's cell)

gserbele@hotmail.com

Kevin & Lynette Thompson

5125 53rd St • Almont, ND 58520-9731

(701) 391-1631 (Kevin's cell)


(701) 843-8454

kevinandlynette@westriv.com



Bulls viewable anytime at the Erbele Ranch, 30 m. S of I-94 Exit 228 • Videos at www.tntsimmentals.com • Contact us for a catalog.

- Volume discounts!
- Performance Data and Genomic-Enhanced EPD!
- No creep feed!
- Majority homozygous polled!
- All reds are non-diluters!
- All blacks will be homozygous- or heterozygous-black verified!



TYLER & CAM FAGERHAUG

605.280.1416
605.350.2018

WESSINGTON, SD

SIMMENTAL CATTLE & PERFORMANCE HORSES



“KNOW YOUR RANCHERS” - FAGERHAUG CATTLE

This “Know Your Rancher” blog was published by the South Dakota Beef Industry Council. Find more great BEEF stories at www.sdbeefblog.com

Ranch Name & Family Members Involved?

Tyler and I (Cam) operate as Fagerhaug Cattle, along with our two young sons Lawson (6) and Cecil (3). We help my dad, John Christensen with his large seedstock operation, 3C Christensen Ranch.

Segment of the Beef community?

Our family is blessed to be involved in more than one segment of this great industry. Together Tyler and I operate a higher concentration of SimAngus commercial cow/calf pairs as well as market commercial SimAngus bred females. We are lucky to be included in my dad’s seedstock operation and assist in all aspects of his registered Simmental program,

...Continued on page 32



Lazy C DIAMOND SIMMENTAL RANCH

FEBRUARY 2ND, 2022 - 1PM CST

Selling: @ THE RANCH - KINTYRE, ND

- * 85 yearling & 18 month old Red & Black Simmental/SimAngus™ Bulls
- * SELECT female & embryo lots

PRE-SALE VISITORS ARE ALWAYS WELCOME & RECEIVE \$100 OFF A BULL PURCHASE
VOLUME DISCOUNTS & BEGINNING RANCHER DISCOUNTS
 ALL BLACK BULLS ARE VERIFIED HOMO OR HETERO BLACK



LCDR Ms Julia (2J) API 175 TI 105 - Homo Polled/Homo Black - PB SM
 Pick of these C4 flushmates will be a sale feature! Sired by BG78 (294225)



LCDR 362J API 143 TI 86
 Homo Polled/Red Blaze - 3/4 SM
 Unique pedigree on this fancy red blaze Motley son!



LCDR 246J API 156 TI 87
 Homo Polled/Black Pending - PB SM
 Powerful flush of W/C Fort Knox x 38W's will sell!



LCDR 242J API 152 TI 101
 Homo Polled/Homo Black - PB SM | Lcdr Impact x 836Z blaze face!
 Many baldies/blazes in the offering!



LCDR 201J API 158 TI 99
 Homo Polled/Homo Black - PB SM
 Lead off Lcdr Favor son that showcases one of our best flushes in 2021!



LCDR 356J API 140 TI 95
 Homo Polled/Black Pending - 3/4 SM
 Large Lcdr Impact sire group will once again be sale features!

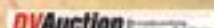
LAZY C DIAMOND RANCH

CHRIS & JULIA NICHOLSON || 6235 23RD AVE SE || KINTYRE, ND 58549
 CHRIS: 701-391-6904 || EMAIL: CNN2005@HOTMAIL.COM



"LazyCDiamondSimmRanch"

www.lazycdiamondranch.com



TSN Simmentals

Annual Bull Sale

EPD's as of 12/20/2021

February 22nd, 2022
Platte Livestock Market, Platte, SD
Selling 60 Registered Simmental and SimAngusTM Bulls

Tim Naasz- (605)207-0229
Home- (605)337-3503
27005 360th Ave
Platte, SD 57369
<https://www.tsnsimmentals.com/>
tsnsimm@midstatesd.net



TSN Chief J922

TJ Chief x TSN Miss Eagle
5/8 SM 3/8 AN
API:166 TI:98



TSN Eagle J364

Hook's Eagle x TSN Miss Force
PB Simmental
API:176 TI:97



TSN Eagle J575

Hook's Eagle x TSN Miss Rimrock
PB Simmental
API:173 TI:100



TSN All-Around J438

WS All-Around x TSN Miss Am Pride
PB Simmental
API:154 TI:89



TSN Proclamation J747

WS Proclamation x TSN Miss Prophet
3/4 SM 1/4 AN
API:156 TI:93



TSN High Road J937

KBHR High Road x TSN Miss Eagle
PB Simmental
API:154 TI:103

Know Your Ranchers - Fagerhaugs
Continued from Page 29

which just celebrated its 50th year of selling bulls in March of 2021. We have a small herd of registered Simmental and SimAngus cows and continue to grow that genetic bank as we expand our operation.

Where is your ranch located?

Our operation rests in the rolling Wessington hills, in southern Hand County, SD.

How long have your ranched?

Both Tyler and I grew up on a multi-generational, family operated ranches and were always involved with day-to-day operations. Our boys are the 5th generation of our family to be involved in beef cattle production in this area.

Tell us a little bit about yourself, your family and about your ranch?

Both Tyler and I graduated from South Dakota State University with agriculturally related degrees. Tyler worked as a crop adjuster for Great American for several years as well as rodeoed and trained horses while building his commercial cow/calf operation and helping on his dad's ranch. I worked for a cattle genetics consulting business, Allied Genetic Resources, as well as for Farm Bureau for a few years until finding my way

...Continued on page 34





Ellingson Right Now J104 ASA# 3940010
 CE BW WW YW ADG MCE MM MWW SAPI \$TI
 12 3.1 106 173 42 7 28 81 133 94
 Adj. WW: 965 Adj. YW: 1,549



Ellingson Classic J129 ASA# 3940035
 CE BW WW YW ADG MCE MM MWW SAPI \$TI
 12 2.5 95 147 32 6 30 78 146 90
 Adj. WW: 871 Adj. YW: 1,553



Ellingson Dynasty J164 ASA# 3940069
 CE BW WW YW ADG MCE MM MWW SAPI \$TI
 7 4.2 98 155 36 4 27 76 121 83
 Adj. WW: 824 Adj. YW: 1,480



Ellingson Design J174 ASA# 3940079
 CE BW WW YW ADG MCE MM MWW SAPI \$TI
 12 1.5 97 155 36 6 31 79 133 91
 Adj. WW: 821 Adj. YW: 1,538



Ellingson Total J180 ASA# 3940085
 CE BW WW YW ADG MCE MM MWW SAPI \$TI
 11 1.1 91 143 32 8 31 76 153 93
 Adj. WW: 830 Adj. YW: 1,315

For catalogs and information:



Terry Ellingson & Family

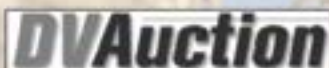
Phone: 701-384-6225

Cell: 701-741-3045

5065 125th Ave. NE • Dahlen, ND 58224

email: tellings@polarcomm.com

The catalog and updated information (homozygous polled test, ultrasound and scrotal measurements) will be available online.



EPD pulled 11.30.21

Looking for Performance?

Ellingson Simmental Performance Bull & Female Sale

Friday, January 28, 2022 • 1:00 pm CST

Sale Location: At the farm, Dahlen, ND

22nd Anniversary

Selling:

**60 Yearling Simmental and SimAngus™ Bulls
 30 Open Yearling Heifers**

Sires include: WS All Aboard 880, CLRS Guardian 317G, SVS Captain Morgan 112, TJ Main Event 503B, W/C United 956Y, Ellingson Ultimate F830, RFS Bulletproof B42, LFE The Riddler 323B, Hook's Eagle 6E, Harvie Red Summit 54B, NGDB Structure 34D, Hart State Of War 056C, WS Epic E152, CDI Perception 254E, G A R Prophet

Bulls will be SEMEN TESTED and GUARANTEED BREEDERS.



Ellingson Ace J183 ASA# 3940088
 CE BW WW YW ADG MCE MM MWW SAPI \$TI
 5 3.8 107 161 34 3 31 84 129 95
 Adj. WW: 932 Adj. YW: 1,545



Ellingson Spartan J187 ASA# 3940092
 CE BW WW YW ADG MCE MM MWW SAPI \$TI
 9 2 98 153 34 4 33 82 136 91
 Adj. WW: 845 Adj. YW: 1,504



Ellingson Advance J190 ASA# 3940095
 CE BW WW YW ADG MCE MM MWW SAPI \$TI
 7 4.1 102 157 34 4 29 80 137 89
 Adj. WW: 845 Adj. YW: 1,266



Ellingson Anchor J192 ASA# 3940097
 CE BW WW YW ADG MCE MM MWW SAPI \$TI
 5 6.1 100 149 30 2 23 73 85 70
 Adj. WW: 838 Adj. YW: 1,345

www.ellingsonsimmentals.com or www.simmental.org

Know Your Ranchers - Fagerhaugs
Continued from Page 32

to the newspaper. We were married in 2013 and in 2018 we purchased our own smaller ranch, that conjoins my dad's operation.

The majority of our cows are commercial and we typically wean and background our steer calves, marketing them at public auction 60 -90 days post weaning. This year, due to drought, we will market our steers right off the cow for the first time ever, hoping to conserve fall grazing/winter feed options for our momma cows.

We retain our top end of commercial females and develop them to be marketed as bred females, as well as retain a few for ourselves.

Our small, but profitable seedstock operation consists of Purebred Simmental and SimAngus cattle in which we market our bull calves on my dad's annual bull sale in March every year. My sister (NaLani Dunsmore) and her family are also involved in the seedstock side of things, with their own Sim-influenced program, NLC Ranch. We are truly a family operation.

Along with the cow/calf side of things I (Cam) also design and create sale catalogs and other promotional materials for a handful of producers each sale season. I thoroughly enjoy this process of helping other producers market their hard work. My graphic design talents also found their way to my hometown newspaper, the True Dakotan, located in Wessington Springs, SD. This opportunity has also afforded me the ability to create feature stories and editorials showcasing the ranching lifestyle and heritage behind it, reaching a different readership than what I may have ever touched just through my own social circle.

We are also still involved in marketing a handful of rope/ranch horses for sale each year by private treaty.

What do you want consumers to know about the Beef industry?

The best place for a consumer to gain knowledge of a product is to go directly to the source. Ask a producer if you have a question, not the internet. There is a lot of misinformation that gets passed around about the practices and principles of the cattleman, and agriculture in general. We are some of the most meticulous and nurturing members of society and are also held to the highest of standards in food quality in the WORLD. We present our BEST products with pride and we would love to take the time show you that.

This is also a reminder to producers to never hesitate to share their world with those that may not be properly informed on our goals and intentions as cattle producers and true stewards of the land. Take the time, whether it's social media, the clerk at the convenience store or your child's classmate to educate someone in the process of "pasture to plate" and how much care and concern goes into each step to ensure a high quality, nutritious and safe food source.

...Continued on page 36





10th Annual Production Sale

FEB. 6, 2022

AT THE RANCH • HURDSFIELD, ND

Selling: 55 Simmental and SimAngus™ Bulls
35 Registered Open Heifers
& 25 commercial bred black heifers



J14

W/C LOCK DOWN 206Z x DCR MR POWER UP E68
ASA#: 3953732 • BD: 2/17/2021 • 3/4 SM 1/4 AN



J91

DCR MR MAIN ATTRACTION E18 x KLSR RED MAN Y26
ASA#: 3953674 • BD: 3/19/2021 • PB SM



J96

DCR MR MAIN ATTRACTION E18 x S A V HARVESTOR 0338
ASA#: 3953725 • BD: 3/18/2021 • 3/4 SM 1/4 AN



J102

WLB BLOOD RUNNER 3011C 461F x KLSR GAME CHANGER Z32
ASA#: 3982287 • BD: 3/18/2021 • PB SM



J48

MRL RED WHISKEY 101B x OLF RED PATRIARCH W124
ASA#: 3953686 • BD: 3/4/2021 • PB SM



J114

WLB MANITOBA 52Z 435B x RENDEZVOUS LOCOMOTIVE 80B
ASA#: 3953689 • BD: 3/20/2021 • 3/4 SM 1/4 AN



J20

SPRINGCREEK IRONSIDES 53tG x NLC BREAK FREE 72W
ASA#: 3953666 • BD: 2/19/2021 • PB SM



J44

LFE THE RIDDLER 323B x IPU ROYAL FLUSH 4C
ASA#: 3953665 • BD: 3/2/2021 • PB SM



J7

SITZ STELLAR 726D x LFE THE RIDDLER 323B
ASA#: 3953707 • BD: 2/15/2021 • 1/2 SM 1/2 AN

FEEDER CALF MARKETING ASSISTANCE • REPLACEMENT HEIFER CALF BUY BACK

Our customers' success is our success! **DVAuction**



Join us for our 10th Anniversary Sale in our new heated sale facility!

Visitors welcome anytime!

Monty & Terri • Matt, Eddy, Emersyn & Landri Kline

Matt: (701) 693-6317 • Monty: (701) 693-6806

E-mail: klsrcows@gmail.com

www.KLSRCOWS.com • [f](#) /Kline Simmental Ranch

Contact us for a catalog, videos, DNA and other updates prior to sale day.

Know Your Ranchers - Fagerhaugs
Continued from Page 34

One word to describe your life as ranchers and why?

While commonly stated, BLESSED is simply the best way to describe our way of life. It is a beautiful, burdening, always educating, faith required, exhausting yet rewarding way to raise our family. It proves that challenges can present opportunities and I am proud to raise my children in that kind of environment, in an industry they can become involved in at such a young age. Whether my boys decide to pursue a passion in agriculture or delve into a different industry, they will always have the knowledge their heritage has provided to help tell our ranching story to those less familiar with our lifestyle.

Favorite Beef Dish?

A good home raised steak on the grill is unbeatable and what we all enjoy! On big work days like working calves or ultra-sounding cows my go-to's are always crockpot meals! I throw a frozen roast in with onion soup mix and a can of cream of mushroom soup- it is always a delicious, filling way to keep the cowhands happy. It can be served with potatoes and carrots cooked right with it or sometimes I shred it for sandwiches.



There is a **DIFFERENCE!**

Wicks Cattle Sale: Monday
FEB. 7, 2022
 AT THE WIX BARN & LODGE
 RICHARDTON, N.D., 2 P.M. MT



J100 • War Cry x Singletary • 5/8 SM 3/8 AN



J79 • Bemer x Upgrade • 1/2 SM 1/2 AN

80 SIMMENTAL & SIMANGUS™ BULLS
 BLACK & RED BULLS
 73 YEARLINGS &
 7 LONG-AGE BULLS

6 ELITE BRED FEMALES

**WICKS
CATTLE**

Zane, Mary Jo, Josie & Mya Wicks • Richardton, N.D. • 701-290-3938

Videos available at www.wickscattle.com • Like us on Facebook!

DVAuction

LARGE SELECTION. HIGH VALUE. GUARANTEED.

**“MY 3C INFLUENCED CALVES
PAID \$167/HEAD PREMIUM
ON CARCASS.”**

*-Pat Cramton, Pretty Prairie, KS
longtime 3C/NLC customer & friend*



1108J - Sired by New Herd Sire 3C Gentl



**1098J - Sired by New Herd Sire KBHR Genesis
Pictured with his TNT Tanker Dam**



1304J - Sired by 3C Flint



51st Annual Production Sale
AT THE RANCH, WESSINGTON, SD
FRIDAY, MARCH 18, 2022

Offering 150 Top Tier Simmental and SimAngus™ Yearling bulls that marble!

NLC
SIMMENTAL RANCH

Rick, NaLani,
NaLea, Chase, & Swayzee Dunsmore
21830 372nd Ave., Wessington SD 57381
Home: 605-458-2425 • Rick cell: 605-354-7523
NaLani cell: 605-350-5216

3C CHRISTENSEN RANCH
Wessington, SD
John & Cally Christensen
Tyler, Cam, Law & Cecil Fagerhaug
37273 216th St • Wessington, SD 57381
Home: 605-458-2218 • John Cell: 605-350-1278
Tyler Cell: 605-280-1416 • Cam Cell: 605-350-2018

FOCUSED ON YOUR PROFIT.

WEAN HEAVIER CALVES WITHOUT SACRIFICING YOUR REPLACEMENT PEN.

24TH ANNUAL GENETICS WITH VISION PRODUCTION SALE • FEBRUARY 12, 2022
100+ YEARLING & 18-MONTH-OLD BULLS, BRED AND OPEN FEMALES



LCDR IMPACT 134F

PUREBRED SIMMENTAL | ASA# 3491039
 CDI MAINLINE 265D x WS MISS SUGAR C4

SELLING SONS AND DAUGHTERS BY THIS LIMITED SIRE!

GROWTH + PERFORMANCE

TOP 1% WW - YW - ADG - MWW - CW - REA - TI

HIGHEST WW & YW PUREBRED BULL IN THE BREED!

OUTSTANDING PHENOTYPE | EXCELLENT CARCASS QUALITY
 MODERATE BUILT, SIX FRAME SCORE

H302 - PB - ASA# 3828936



LCDR Impact x SVF Allegiance
 Homo Black - Homo Polled - 18-Month
 Several 18 month Impact sons sell!

H107 - PB - ASA# 3782069



LCDR Impact x Ellingson Load Up
 Homo Black - Homo Polled - Bred
 Bred to LRS Falcon 442G due in early March
 Several bred females sired by Impact sell!

J86 - PB - ASA# 3933252



LCDR Impact x TNT Punch
 Homo Black - Homo Polled - Yearling

J34 - 3/4 - ASA# 3933200



LCDR Impact x CLRS Constitution
 Homo Black - Homo Polled - Yearling

J129 - PB - ASA# 3933296



LCDR Impact x CDI Verdict
 Hetero Black - Homo Polled - Yearling
 Full brothers sell!

J112 - PB - ASA# 3933279



LCDR Impact x TNT Dual Focus
 Homo Black - Homo Polled - Yearling



VISIT OUR WEBSITE TO JOIN OUR MAILING LIST TODAY

47499 199th Ave, Clearbrook, MN 56634 | rydeen@gvtel.com
 Farm: 218-776-3338 | Paul: 218-280-1916 | Rydeen Farms



BID ONLINE! **DVAuction**

WWW.RYDEENFARMS.COM

Rydeen Farms
 SINCE 1897

Polled Red & Black Simmental Cattle



48th Annual Production Sale

SELLING 60 BULLS & 20 BRED FEMALES

AI BRED TO THE INDUSTRY'S
LEADING SIRES

Friday, January 28, 2022

12:00 Noon • 48672 252nd Street • Garretson, SD 57030

Offering **SIMMENTAL, SIMANGUS & ANGUS**



KRJ DAKOTA OUTLAW G974

ASA#3632499 • PB • TURNPIKE X UPRISING

Selling full sibs & offspring from this past high seller!
Ranks in top 1% for WW, YW, ADG, YG, BF EPD

**ALL CATTLE HOMOZYGOUS POLLED
& COAT COLOR TESTED**



0156

ASA#3786534 • PB

INNOVATOR X DREAM ON (ET)

5 Direct Daughters of deceased T739 Donor!
Bred to High Road



036

ASA#3786438 • 3/4

RIGHT TIME X OPTIMIZER

Exciting limited genetic package!
Bred to High Road



170

ASA#3929091 • PB

CONOCO X INTEGRATE

New outcross with top growth & carcass!



184

ASA#3929105 • PB

KRJ SUPREME X COWBOY CUT

Top growth, with frame & performance oriented!



195

ASA#3929115 • PB

RIGHT TIME X DJF WRANGLER

Popular limited curve bending genetics!



198

ASA#3929118 • 3/4

FRANCHISE X TANKER

Longevity, constant top weaning weight
cow family!



1119

ASA#3929137 • PB

INVENTION X BOISE

Eye appealing baldy with maternal bred in!



1163

ASA#3930298 • 1/2

MULBERRY X RED JEWEL (ET)

Outstanding PB & Percentage Red Bulls Sell!

For more information or to request a catalog...

KIPP JULSON 605-351-9088 • doublejfarm@alliancecom.net • www.doublejsimmentals.com

Online bidding at...



Brink Simmentals

Fullblood Fleckvieh Cattle, Embryos, and Semen Available

SALE DATE
MARCH 10,
2022

**LET OUR GENETICS IMPROVE YOUR
PAY WEIGHT & PROFITABILITY**

SELLING: Elite Full Fleckvieh
Yearling Bulls and Females
ALL DILUTER FREE



Selling J1004ET sired by Brink Polled Canvas
BD: 1/22/21 WW: 956 lbs



Selling J1035 sired by Brink Flush
BD: 2/5/21 WW: 1013 lbs



Selling J1051 **POLLED**
sired by Brink Polled Canvas
BD: 2/10/21 WW: 913 lbs



Selling J1018 sired by Brink Flex
BD: 2/1/21 WW: 915 lbs

**Progeny
Data:**

Fort Pierre, SD Livestock Auction 11/3 and 11/5, 2021
Total Steers: 7241, Average weight of 561 lbs
Brink Fleckvieh Sired Steers: 127, Average weight of 617 lbs
Tayler Assman, SD – outstanding Brink Fleckvieh client, also reports his 127 head of steers had no implants or creep.
Thank you.

Eight Semi Loads of Steers and Heifers
Average weight- 1,393 lbs, 62.43 - Yield
25.3% Prime, 70% Choice, 75% Yield Grade 2
23% Yield Grade 3, 2% Yield Grade 4
White Heart Ranch, ND, has been purchasing Brink Fleckvieh bulls since 2007. Thank you.

ALL BULLS SOLD BY PHONE AUCTION

Call us to request a catalog by mail. Performance and ultrasound DATA available on all bulls. Pictures, videos and Online catalog available beginning in February on our website: BrinkGenetics.com

**CUSTOMERS
SELLING MORE WEIGHT IN
THEIR MARKET WINDOW
= MORE MONEY**

23098 Gunder Rd., Elkader, IA 52043 · brinkgenetics.com

Jerry – 563-245-2048 or 563-880-1470 cell · jbrink@alpinecom.net

Preston – 563-880-2075 · prestonbrink@gmail.com

RENDEZVOUS FARMS

18th Annual "Holiday-Monday" Bull & Female Sale

Monday February 21, 2022 - 1 PM Sharp Rendezvous Farms - Ste. Rose, MB*

**only 3 hours from Bottineau, ND*

Exclusively owned herdsires such as these are the reason our bulls go out & work.

LHVS CHARLES 29C



SKORS RAMPAGE 88F



LFE AVENGER 834E



SPRING CREEK DYNASTY 31G



130 bulls & 52 open heifers sell

Internet Bidding available with DLMS.ca
Sale will be held on the farm, Ste. Rose, MB in our heated shop.



HUGE thanks to our American customers who purchased a whopping **43 HEAD** into **4 states** in last year's sale.

We are truly humbled by your continued faith in our breeding program.

Travis Burgard - Rugby, ND · Loren Duchsherer - Balfour, ND
Mike Erfle - Heaton, ND · Gumbo Flats Ranch - Fort Rice, ND
Haman Ranch - Rugby, ND · Huber Simmental Ranch - Hallday, ND
Justin Letezier - Cavalier, ND · Triple V Ranch - Carrington, ND
Glen, Melinda & Leon Altentaler - Britton, SD · Nick Stormo - Hayti, SD
Jacob Bach - Watertown, SD · S&A Frericks Inc. - Ashton, SD
Todd Krogedal - Bainville, MT · Tom Dush - Elba, NE



professionally managed by
TRANSCON
Livestock Care

DOWNLOAD THE CATALOGUE AT
WWW.TRANSONLINESTOCK.COM

Jay Good (888) 556-5563 Glenn Norton (204) 542-8634 Darren Paget (403) 323-3985



David Maguet 204-447-7573

RENDEZVOUS
FARMS



Gerald Maguet 204-447-5037

Ste. Rose du Lac, MB · rendezvousfarms@hotmail.com

EVALUATE VITAMIN A SUPPLEMENTATION FOR BEEF CATTLE

Vitamin A is an important vitamin for beef cow diets this winter.

Drought brings many nutritional and animal health-related challenges. Cow performance issues during the grazing season may result from reduced forage quality and quantity. It is possible that cows will enter the fall and winter in lower than desired body condition score and with other potential nutrient deficiencies that may not be noticeable. Vitamin A deficiency is one potential challenge that may arise when feeding drought-affected forages, according to North Dakota State University (NDSU)

Extension specialists.

Vitamins are classified as water soluble (B vitamins, vitamin C) or fat soluble (vitamins A, D, E and K). Vitamins play critical roles in animal growth, immune function, nervous system function, reproduction, bone development and nutrient utilization. Under normal conditions, water soluble vitamins are synthesized in the body and do not need to be provided in the diet. However, with the exception of vitamin D, beef cattle are not able to synthesize

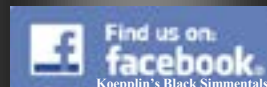
fat soluble vitamins.

“Vitamin A (retinol) is the vitamin most likely to be deficient in beef cow diets this winter,” says Janna Block, NDSU Extension livestock systems specialist at the Hettinger Research Extension Center. “Vitamin A is not present in plant material, but its precursors, also known as carotenoids such as beta-carotene, are present in high amounts in leafy green forage.

...Continued on page 44



Black Simmental & SimAngus™



34th Annual Production Sale

Selling 51 Yearling Bulls



811J
¾ SM ¼ AN

Hook's Beacon 56B x LRS Elevate 213B

BD: 2-8-21 BW: 77 WW: 795

CE	BW	WW	YW	MCE	Milk	MWW	API	TI
14.6	-1.1	81.7	126	9.6	28.6	69.4	167	94

KOEPLIN'S BLACK SIMMENTALS

Tuesday, February 1, 2022

2:00pm CT • Kist Livestock • Mandan, ND



557J
Purebred

TJ Cowboy Up 529B x Mr 23Y

BD: 2-24-21 BW: 94 WW: 884

CE	BW	WW	YW	MCE	Milk	MWW	API	TI
11.0	1.3	80.6	116	7.4	22.7	62.9	148	82



323J
Purebred

Oval F All Time A322 x Kappes Lucky Man W603

BD: 2-11-21 BW: 91 WW: 786

CE	BW	WW	YW	MCE	Milk	MWW	API	TI
9.8	2.0	78.0	118	8.3	32.4	71.4	129	75



914J
¾ SM ¼ AN

MRL Discovery 21A x Connealy Right Answer 746

BD: 2-9-21 BW: 83 WW: 758

CE	BW	WW	YW	MCE	Milk	MWW	API	TI
12.3	0.3	74.5	123	9.0	19.4	56.6	122	72



604J
Purebred

BCLR Cash Flow C820 x Triple C Bettis S72J

BD: 2-2-21 BW: 84 WW: 848

CE	BW	WW	YW	MCE	Milk	MWW	API	TI
12.3	1.7	95.4	144	5.7	11.6	59.2	148	87



013J
½ SM ½ AN

Exar First Class 1421B x TNT Jump Start R238

BD: 2-8-21 BW: 89 WW: 805

CE	BW	WW	YW	MCE	Milk	MWW	API	TI
7.3	3.3	82.7	124	3.5	20.7	62.0	118	76

Planned Mating EPDs

Terry & Marci Koeplin
7035 80th St SW • Elgin, ND 58533
Home: 701-584-3292 • Cell: 701-214-8212
koeplinranch@hotmail.com

Visitors are always welcome at the ranch!

Where Friends Meet...

Sale will be broadcast for online bidding by



Vitamin A Supplementation Continued from Page 42

Beta-carotene is converted to vitamin A mainly in the cow's small intestine."

A study published by researchers at the Ohio State University evaluated vitamin A equivalents of feedstuffs commonly fed to beef cattle in a five-state area. They reported that fresh pasture contained approximately five times more vitamin A equivalents than corn silage and 10 times more than hay. Corn, corn co-products and silage are other feedstuffs that typically contain moderate to good levels of carotenoids.

"During a grazing season with normal precipitation and adequate quantities of lush, green forage, daily intake of beta-carotene may be three to five times the animal's requirement," says Block. "When this occurs, excess vitamin A can be stored in the liver."

She adds that while cattle may store

two to four months of vitamin A in the liver, storage is highly variable and cannot be assessed accurately without a liver biopsy sample.

"During drought, beta-carotene in growing forage is inadequate to meet requirements, limiting liver stores," says Block. "In addition, feed supplies after a drought year largely consist of harvested low quality forages which contain little to no beta-carotene. Even if forage was green at harvest, exposure to sunlight, heat and moisture reduce vitamin A activity during storage. Pregnant cows consuming low quality forages that have consumed minimal quantities of green grass this year are at high risk of vitamin A deficiency and should be supplemented."

Zac Carlson, NDSU Extension beef cattle specialist, cautions that high levels of nitrate in rations also can contribute to vitamin A deficiency through interference in the conversion of beta-

carotene to vitamin A and reduced absorption in the animal.

Pregnant cows require approximately 1,300 International Units (IU) per pound of dry feed, and lactating cows and bulls require approximately 1,800 IU. For example, a dry cow weighing 1,300 pounds would require around 42,250 IU of vitamin A per day, assuming dry matter intake of 2.5% of body weight. A lactating cow weighing 1,300 pounds would require 59,000 IU of vitamin A per day.

"Vitamin A can be provided through dry or liquid supplements, mixed feeds or mineral supplements," says Carlson. "Vitamin A concentrates also are available and can be added to home-mixed supplements or rations. Commercial supplements should be evaluated to determine whether or not products supply adequate vitamin A."

...Continued on page 46



Our Long-Term Commitment To

Powerful Genetics

starts with productive dams like these!



J361 *Sells Feb. 4!*

TRAX'S BULL DOG G49 X IPU RED DEPUTY 25C
Homo Polled • ASA# 3963423 • Adj. WW 802



J451 *Sells Feb. 4!*

BBS BATMAN F4 X MYTTY IN FOCUS
Homo Polled • Homo Black • ASA# 3963513 • Adj. WW 884



J301 *Sells Feb. 4!*

HART STATE OF WAR 056C X COLORADO BRIDLE BIT E752
Homo Polled • ASA# 3963363 • Adj. WW 757



J358 *Sells Feb. 4!*

BBS BATMAN F4 X HSR IRISH SPRING B775
Homo Polled • Homo Black • ASA# 3963420 • Adj. WW 734



J383 *Sells Feb. 4!*

TRAX'S BULL DOG G49 X DKSR WESTERN BEEF Y420
ASA# 3963445 • Adj. WW 920

Call to be added to our mailing list and to request a catalog!

Dusty & Kayla Kunkel, New Salem, ND
(701) 471-5342 • (701) 843-7006
www.kunkelsimmentals.com

E-mail: kdkunkel@westriv.com • Visitors always welcome!

DVAuction **ALFD**

Kunkel Simmentals
DKSR

Annual Production Sale

Feb. 4, 2022

At the Ranch • New Salem, ND • 1 P.M. CST

50 BULLS • 36 BRED HEIFERS

Vitamin A Supplementation
Continued from Page 44

Block provides the following example for calculating vitamin A provided in a mineral supplement. If a mineral supplement contains 200,000 IU per pound and target intake is 2 ounces of mineral per head per day, cows would be consuming approximately 25,000 IU of vitamin A per head per day ($200,000 \div 16 \text{ oz/lb} = 12,500 \text{ IU/oz}$; $12,500 \text{ IU/oz} \times 2 \text{ oz} = 25,000 \text{ IU}$). This level of consumption would not meet the requirements for dry or lactating 1,300-pound cows, she notes.

Block also notes that vitamin A precursors are unstable and susceptible to oxidation when stored for long periods of time, particularly when included in an inorganic mineral mixture. To reduce vitamin A losses, she advises against storing mineral products for more than a few months.

"Injections of vitamin A also may be used," says Block. "However, it may be necessary to repeat injections every

three to four weeks for deficient cows."

If dietary vitamin A is not adequate, a critical time for injection in pregnant cows is at least two months prior to calving to build up stores in the cow and ensure that adequate levels of vitamins are present in the colostrum. Calves have minimal vitamin reserves at birth and are highly dependent on an adequate supply of vitamins from the dam through colostrum and milk.

"Consequences of vitamin A deficiency include poor feed conversion and gain, reduced growth, low conception rates, abortion, stillbirths and weak calves," says Gerald Stokka, NDSU Extension veterinarian and livestock stewardship specialist. "Common symptoms of vitamin A deficiency include reduced feed intake, rough hair coat, night blindness, diarrhea and swelling of the legs and brisket."

Although required at relatively small amounts, vitamins are a critical component of beef cow diets, says Stokka. Forages and other low quality feeds that are deficient in vitamin A may also be deficient in other nutrients such as protein, energy and minerals. Forage analysis is recommended,

and farmers and ranchers should consult with their veterinarians if they are interested in a liver biopsy to assess vitamin and mineral status of

"Vitamin A can be provided through dry or liquid supplements, mixed feeds or mineral supplements."

their cow herds.

Considerations for choosing the best supplement product include the production stage and weight of cattle, forage quality and expected intake of feeds. Contact your local NDSU Extension agent, nutritionist or veterinarian for more information about how vitamin A deficiency may affect your herd, and how you can prevent issues this winter.

HEALY SIMMENTAL **ANNUAL BULL SALE**
February 4, 2022 - 11:00 am CST
 STOCKMEN'S LIVESTOCK MARKET - YANKTON, SD

[Selling 45 Bulls]
 BID ONLINE WITH DV AUCTION

0156 1/2 SM 
 RBS BOISE x SP THE ANSWER

0023 3/4 SM 
 KGH IMPULSE x KGH EXCLUSIVE

0083 PB SM 
 WRS CALL BACK x GCF BEYOND

0713 3/4 SM 
 KGH IMPULSE x WRS CALL BACK

HEALY SIMMENTAL 29621 441 AVE - IRENE SD 57037
 KEVIN HEALY 605-660-3880 - SIMON HEALY 605-661-3588
 WWW.HEALYSIMMENTAL.COM



Benda Ranch

ANNUAL PRODUCTION SALE

Monday, February 14, 2022 • 1 p.m. • Kimball Livestock Exchange, Kimball, SD



JBS Mr Boulder 938J • ASA# 3956915
CCR Boulder x DCR Domination • 3/4 SM



JBS Mr Cash Flow 812J • ASA# 3956809
BCLR Cash Flow x CNS Dream On • PB SM

BULLS HAD NO CREEP FEED! • FREE WINTERING UNTIL APRIL 15TH & SEMEN TESTED.

Also selling this year: 24 Top-end registered bred heifers; most will calve in March.



JBS Mr Earl 752J • ASA# 3956789
3BS Earl x WS Prime Beef • PB SM



JBS Mr Renown 731J • ASA# 3956806
SAV Renown x JBS Big Casino • 1/2 SM



JBS Mr Blackhawk 902J • ASA# 3956934
Hook's Blackhawk x CCR Boulder • 5/8 SM



JBS Mr Night Watch 907J • ASA# 3956920
W/C Night Watch x J Bar J Nightride • PB SM



JBS Miss Night Watch 804H • ASA# 3792517
W/C Night Watch x JBS Mr Force 107A
PB SM • Bred to a Nightride son



JBS Miss Cash Flow 547H • ASA# 3792488
BCLR Cash Flow x Wheatland High Octane
PB SM • Bred to a Night Watch son

BENDA RANCH SIMMENTALS • 26106 366th Ave. • Kimball, SD 57355
Home: 605-778-6703 • Jim: 605-730-6703 • Jay: 605-730-0215
Email: bendaranch@midstatesd.net

www. **BendaRanch.com**
Join us for our Video Sale! Watch and bid online.

DVAuction
DRIVING VALUE AND AFFORDABILITY



MARTIN-TRUDEAU INSURANCE

LIVESTOCK DIVISION

LIVESTOCK:

- Mortality
- Infertility
- Prospective Offspring (Pregnancy)
- Packers & Stockyards (Mortgage & Stolen Cattle)
- Feed Yards

EQUINE:

- Mortality
- Major Medical/Surgical Options
- Stallion Infertility (ASD)
- Prospective Foal
- Private Horse Owner's Liability Endorsement

Frozen Semen & Embryo/Storage & Transit

We proudly represent the following companies:

*AXA XL, Liberty Mutual, Stockmen's Insurance, Nationwide,
Chubb Agribusiness, Grinnell Mutual, Berkley Equine & Cattle*



COLTON TOBIN • RANDA DEAN • KATIE WILLIAMS • RAY TRUDEAU • CHRISTOPHER NELSON • AMY BUSSMUS-PUPEPKE

Livestock Insurance endorsed by the SD Angus Association, SD Simmental Association & SD Hereford Association



1531 W Elm Ave • P.O. Box 487
Mitchell, SD 57301

605-996-3106
1-800-450-3106



WWW.MARTIN-TRUDEAUINSURANCE.COM

THYEN *Simmentals*

SECOND ANNUAL
PRODUCTION SALE
FEBRUARY 19TH - 1 PM



Supreme Row Champion Watertown Winter Farm Show

with fellow consigner
SOLSAA ANGUS



Picture taken on May 31st with Sitz Barricade son at side

SOLSAA ANGUS SIRES

Sitz Barricade 632F - SAV America 8018 - SAV Rainfall 6846
SAV Raindance 6848 - KG Justified 3023



Grand Champion WWFS

THYEN SIMMENTALS SIRES

Harvie Wallbanger - True Justice
Capacity - Lock n Load - Cowboy Cut
Beefmaker - CDI Authority - Cash Flow

See Videos, Pictures and Bid Online at

DVAuction
Broadcasting Real-Time Auctions

LIVE AUCTION AT THYEN SIMMENTALS
45142 183RD ST - Hayti, SD
3.5 miles West of Kones Korner

CONTACT US FOR A CATALOG
MIKE THYEN (605) 520-0575
ERIC SOLSAA (605) 237-0984



CULL COW MANAGEMENT AND MARKETING OPPORTUNITIES

By Adele Harty, SDSU Extension Cow/Calf Field Specialist

Each year, cow-calf producers have a percentage of cows that are culled from the herd for various reasons. They may have been open at pregnancy check time, lost a calf, have reached a normal culling age, or faced drought conditions that forced an earlier or increased culling rate. No matter the reason for culling, it is important to evaluate the opportunity to add value to these females at marketing, as they can equate to 15-30% of the annual ranch income.

Considering the normal price cycle for cull cows, the seasonal low typically occurs in November as a result of increased numbers of spring-calving cows flooding the market following weaning and pregnancy check. The seasonal high typically occurs in July, but increases are also seen in early spring (April-May), providing the opportunity to market the cows during a different time point and capture additional value by feeding these cows for a period of 30 to 90 days after weaning.

Costs and Benefits of Feeding

There are both costs and benefits associated with feeding cows, and it is important to evaluate your individual situation to determine whether it is feasible for your operation. Some of the questions to consideration are: Do I have the pen or pasture space to manage these cows? What feed resources can

I allocate to this group? Will feeding equipment be available? Do I have the time and labor resources to feed this group of cattle? Those are just a few things to think about. The potential benefits of feeding cows include three main factors: additional weight gain, which can translate into more pounds to sell; improved body condition score (BCS) and slaughter grade, which would add value; and seasonal price increase coupled with the other two factors, which could further increase value.

Additional weight gain will vary based on multiple factors, specifically what condition the cows are in at the beginning of the feeding phase. Take time to evaluate each animal and determine whether they are healthy, with sound feet and legs, and in good condition. If they are not healthy, it is better to sell her rather than risk her dying during the feeding phase. Only healthy cows should be fed. Cows in a BCS of <6 will gain more weight faster than their more-heavily conditioned counterparts at BCS 7 or 8. The type of diet these cows are fed will also play a role in how fast they gain condition and will influence cost.

“Select the cows that have the greatest opportunity to gain weight quickly and efficiently to increase slaughter grade

...Continued on page 52

Rooted in Heritage, Growing through Innovation, Delivering Profitability

With over 50 years of experience raising Simmental genetics, we have pinpointed the traits that increase our customers' profit margin.

The balance of hybrid vigor, calving ease, fleshing ability and fertility complement and enhance any cowherd to produce calves that excel through all stages.



3/8 SM 5/8 AR · API: 134 · TI: 84



3/4 SM 1/4 AR · API: 142.1 · TI: 87.0



1/2 SM 7/16 AR 1/16 AN · API: 145.3 · TI: 89.4



5/8 SM 1/4 AR 1/8 AN · API: 135.6 · TI: 87.7

Join us ...

Annual Production Sale

Tuesday, February 22, 2022

Bulls viewable at the ranch

Sale: 2 p.m. CST · Pifer's Auction, Steele, ND

40 Sim-Red Angus Bulls
35 Sim-Red Angus Bred Heifers



PUREBRED SM · API: 155.1 · TI: 83

DVAuction Broadcasting Real-time Auctions

\$100 Sale Credit
per buyer for visiting the ranch
prior to the sale

EPD as of 12-12-21

Request
a Catalog



DCR
DECKERT
SIM-RED ANGUS

Justin & Carrie Deckert
24952 392nd St NE
Arena, ND 58494
(701) 943-2477
dsrccows@bektel.com

GOLDEN BOOK AWARD WINNERS
Continued from page 24

**Gordon Hodges,
Hamptonville, North Carolina**
- **Science Advocate**

Gordon Hodges is one of a small handful of ASA Trustees who served on the Board for a total of 13 years, first serving two three-year terms from 1990 to 1995, and more recently from 2014 to 2020. During his time on the Board, he has not only served as Board Chairman in 2019, he chaired the Breed Improvement Committee for a number of years and was a member of the steering committee of the 1992 impactful FOCUS 2000 long-range planning symposia that established the agenda for the future direction of the Association.

His affiliation with Simmental genetics dates back to 1970 and he joined the Association four years later. During his first term on the Board, he was heavily involved in the creation of the revolutionary Multi-Breed database and evaluation. In his second term, Hodges has been a champion of the scientific improvement of beef cattle, supporting crucial new projects in genetic evaluation, the switch to single-step genomic assessment and Cow Herd

DNA Roundup, a staunch supporter of collecting carcass phenotypes, and the creation of the revolutionary and highly successful International Genetics Solutions (IGS).

As a sales manager in the early years of his career, he operated Virginia-Carolina Livestock Service and served as an officer in the North Carolina Simmental Association as well as the North Carolina Angus Association. For years, his cattle were marketed through Pineview Farms, his operation at Hamptonville. From his earliest days as a breeder, Hodges has worked relentlessly on behalf of SimGenetic cattle and the beef business in general, advocating for scientific improvement and crucial new projects.

For 14 years, he has served as Genetic and Marketing Manager for Gibbs Farms, a SimAngus™, and Simmental operation now numbering 800 cows near Ranburne, Alabama. He has been



Gordon Hodges

instrumental in guiding Gibbs Farms toward becoming one of the breed's largest, most successful operations. For the past five years, his personal 60-head SimAngus and Simmental herd has operated in a management partnership with Gibbs Farms.

A graduate of North Carolina State University, he holds a B.S. in Animal Science. It was at NCSU that he met his wife, Melissa, who has enjoyed her own 40-year career as a district loan supervisor for USDA's Farm Service

...Continued on page 54

Cull Cows
Continued from Page 50

and hit some of the seasonal price increases."

Marketing Considerations

There is a relationship between BCS and slaughter grade, which means that as BCS increases, the slaughter grade of the cattle will improve. For example, a cow in BCS 4 is considered "lean" and would be a U.S. Department of Agriculture (USDA) grade "cutter." If that BCS 4 cow can be fed to reach a BCS 6, she would move into the "boner" category, which would equate to a USDA grade "utility." The expected price increase for this improvement in grade is \$1.50 per hundredweight (CWT).

Finally, seasonal price increase on average is \$5 per cwt from November to February, but this is not a constant. Depending on the level of cow slaughter, this number can change, so having an understanding of the current cull cow slaughter situation is important.

Feed costs are going to be the largest expense to keeping and managing these cows to a heavier weight, which means that cows that will be less-efficient, such as the heavier conditioned cows, may not be able to put on enough weight and condition to make feeding them a profitable venture. Research indicates that BCS at the beginning of the feeding period is a strong indicator of net returns. Cows that were in a BCS of 6 or greater at the start of the feeding period had zero or negative net return relative

to revenue at culling, while cows that were in a lower BCS at the beginning of the feeding phase yielded a positive net return above revenue at culling when fed on a native pasture, but a negative net return when fed in a dry lot situation (Encinias and Lardy, 2000).

The Bottom Line

Evaluate your costs and projected returns to determine if feeding cull cows would be an option for your operation. This Cull Cow Marketing Calculator from University of Wyoming can help determine whether this would be an economically viable option for your operation. Select the cows that have the greatest opportunity to gain weight quickly and efficiently to increase slaughter grade and hit some of the seasonal price increases.

EDGE OF THE WEST

Production Sale



Annual production sale!
Feb. 8, 2022

1 p.m. • Kist Livestock, Mandan, ND

Selling
85 Simmental & SimAngus™ Herd Bulls
35 Simmental & SimAngus™ Bred Heifers

▼ More females like this will sell Feb. 8, 2022!



H300

Sire: Hooks Xpectation
 Low Birthweight Purebred Simmental



H301

Sire: MRL Capone
 Outcross Red Purebred Simmental



Thanks to Gilliland Ranch, CA for their purchase of KR Miss Halsey H15 from the ND Classic Sale!



H305

Sire: BCLR Panda
 Homozygous Black & Polled Purebred Simmental



H308

Sire: Kinns Mega Wide
 Homozygous Black & Polled 3/4 Blood SimAngus™



Thanks to Ethan Staigle, ND, for his purchase of SRF Miss 042H from the ND Classic Sale!



Contact Us
 for Info!

KAELBERER RANCH
 Claye & Michelle Kaelberer Family
 701-220-3124 • New Salem, ND
 Connor • 701-400-7323

SRF SIMMENTALS
 Todd & Kelly Finke Family
 701-240-7711 • Berthold, ND

KINN SIMMENTALS
 Tyler & Tiffany Kinn Family
 701-220-5276 • Turtle Lake, ND
 Davis & Amber Kinn Family
 701-400-5108 • Turtle Lake, ND

www.**edgeofthewestsale**.com

GOLDEN BOOK AWARD WINNERS
Continued from page 24

Agency. They're the parents of a son, Spencer (Elizabeth), and a daughter, Juliana who is married to Christian Stackhouse. They also have a two-year-old granddaughter, Sloane.

Fred Schuetze, Granbury, Texas - World Influencer

Fred Schuetze has been a beef industry leader at all levels – local, state, national and international. His presence and influence on SimGenetics have spanned multiple decades as he traveled the globe introducing and promoting his favorite cattle breed. His hands-on approach and commitment to the industry identify him as a standout in the eyes of all who have crossed his path.

Among a rare few who have served a total of 13 years on the ASA Board

(2000-2006 and 2015-2020), he has served as board chair, treasurer, publication board chair, Simbrah committee chair, foundation chair, and nominating committee chair among many.

Schuetze grew up in the Texas Hill Country on a family farm that produced beef cattle, sheep, goats, and chickens. After graduating from Comfort High School, he received a B.S. degree from Southwest Texas State University and attended Texas A&M where he earned his Master's degree. He then went to work for the Texas Agricultural Extension Service, serving for nearly a decade as a county agent.

Between 1979 and 1990, he owned and operated a consulting company wherein he designed breeding programs for operations throughout Mexico, Central America, and the US. After working with Les Alberthal, whom he knew growing up in Comfort, they collaborated to develop the famed

Buzzard Hollow Ranch at Granbury. They scoured the globe to find the best fullblood Simmental and Simbrah genetics, purchasing embryos and live cattle in Canada, Europe, South Africa, and in the US. He's been a long-time member of the TSSA, including a term as president, and a founding father of the American Simmental Fleckvieh Federation, serving as president for 15 consecutive years. After being appointed to serve as ASA's official representative to the biannual World Simmental Fleckvieh Federation Congress, he traveled the world-over attending Congresses in South Africa, Brazil, Ireland, Canada, the United Kingdom, Australia, Germany, Columbia, and Poland. In 2020, he completed a four-year obligation as WSFF President.

Presently the managing partner of SOT Simmentals, Schuetze and his wife, Judy, are the parents of two children: Fred, Jr. ("Bud") and JoAnna Keel, plus three grandchildren.



Hoiby Simmental Bulnanza

Northwest
North Dakota's
Source for
Simmental &
SimAngus™ Genetics!

Saturday,

FEBRUARY 19, 2022

1 p.m. CST • McGregor, North Dakota
At the ranch in the heated sale barn.
Please join us for a pre-sale lunch!

Selling:

40 Black & Red Bulls
10 Black & Red Bred Heifers
10 Black & Red Open Heifers
Simmental & SimAngus™



KBHR Wentz X KNH Force
3/4 Simmental

CE	BW	WW	YW	MCE	M	MWW	API	TI
11	2.7	90	131	7	28	73	117.7	76.3



Hooks Beacon X TJ Makers Mark
Purebred

CE	BW	WW	YW	MCE	M	MWW	API	TI
12	1	88	133	8	25	69	158.0	91.4



MRL Battle Cry X KNH Force
Purebred

CE	BW	WW	YW	MCE	M	MWW	API	TI
12	1	76	107	8	33	71	131.3	76.3



MRL Max 171E X PF Vern
3/4 Simmental

CE	BW	WW	YW	MCE	M	MWW	API	TI
8	2.4	77	113	4	24	62	113.9	69.3



CHSR Radar X MRL Chisel
Purebred

CE	BW	WW	YW	MCE	M	MWW	API	TI
8	3	78	110	4.5	24	63	122.2	73.5



WS Proclamation X Blk Sand Wrecking Ball
Purebred

CE	BW	WW	YW	MCE	M	MWW	API	TI
11	1.7	92	136	6.4	32	78	152.2	91.5

HOIBY SIMMENTAL RANCH

Lyndon, Shelley, Paige & Levi Hoiby
7890 191st Ave NW • McGregor, ND 58755
Home: 701-546-4043 • Cell: 701-641-1083



Email: hoibysim@nccray.com
Website: hoibysimmentalaranch.com

11th Annual

RUST MOUNTAIN VIEW

ACE IN THE HOLE

Bull Sale

THURSDAY
FEB.10.2022
AT THE RANCH - 1PM CST



RUST *Confidential* 1307 AAA: 20014895
SCHILLING'S R&L CONFIDENTIAL x RUST MS BEAUTY 907G



RUST *Forged of Fire* 0412 AAA: 19743890
BROOKING FIREBRAND 6068 x BROOKING BEAUTY 8187



RUST *America* 1314 AAA: 20028358
S A V AMERICA 8018 x SOO LINE ROSE 1019



RUST *America* 202J ASA: 3870879
S A V AMERICA 8018 x HARRELL ANGEL 5870C



RUST *Bentley* 2J ASA: 3870797
IPU BENTLEY 81F x MISS WERNING KP 8543U



RUST *Remedy* 200J ASA: 3870835
SO REMEDY 7F x MISS WERNING KP 8543U



64 BULLS

Angus, Charolais + Simmental

JOSH & TRISTA RUST
701-447-2479 Cell: 701-391-9769
rustmountainviewranch@hotmail.com

JOHN EL & ANNETTE RUST
Cell: 701-400-1653

JESSE & AMY RUST
Cell: 701-391-8228

Marketing Team:



www.RustMountainViewRanch.com

G&D/MARTIN

Simmental Production Sale
February 5th :: 1 pm CST

Selling:

45 BULLS
16 BRED REGISTERED HEIFERS
10 COMMERCIAL BRED HEIFERS
15 OPEN HEIFERS

*New Sale
Location*
AT THE FARM
CALVIN, ND



Derik Samuelson
701-370-9031



Be sure to like us on Facebook:
G&D/Martin Simmental
Production Sale

DVAuction

Martin Simmentals



ReckLake, ND

Jeremy Martin
701-370-1787

MIA BAYER JOINS ASA AS YOUTH PROGRAMS AND FOUNDATION COORDINATOR

by Lilly Platts

Reprinted with permission from American Simmental Association

The American Simmental Association is excited to announce the hire of Mia Bayer, Ringle, Wisconsin, to fill the role of Youth Programs and Foundation Coordinator. Bayer has extensive experience in breed association programs, and has organized national shows and youth events. For ten years, she served as the advisor to the North American Junior Red Angus board; in this role, she increased event attendance through active outreach and marketing.

Bayer also has an extensive background in the beef industry. As an owner of Country Lane Farms, she and her family run 150 head of Red Angus and Angus cattle. Her husband Scott, oldest son Ty, daughter Calli, and youngest son Tucker, are all actively involved in the operation. Bayer shares,

“We have been very fortunate to have had success on many levels, and raising our children in this industry has been truly a wonderful experience and way of life for us. Raising my children in the cattle industry has allowed me to firsthand see the difference that junior breed associations can make in a young person’s life. Youth programs help to build a foundation of confidence and positive work ethic as well as providing the opportunity to make connections with other youth across the country that develop into lifelong friendships.”

Bayer currently serves a number of organizations, including the Wisconsin Junior Angus Association as an advisor, the Marathon County Ag Society as a fair board member, the Marathon County Partnership for Progressive

Agriculture on the board of directors, and in 2020 she was an executive committee member for the Wisconsin Livestock Expo.

“I am looking forward to my new role of Youth Programs and Foundation Coordinator,” Bayer shares. “I am looking forward to working with the youth of the ASA in and out of the show ring. It is my hope that I can inspire and encourage the youth to not only be seen, but more importantly to be heard. There are some amazing families involved in this association and I’m excited to get to work with them. I’m also looking forward to working with a great group of people on the Foundation board. They are a fantastic group whose fundraising efforts provide opportunities for youth and adults both.”

CHRISTENSEN *Simmental*



SONS OF OMF EPIC E27 SELL!

ONLINE BULL SALE

APRIL 24, 2022

DVAuction bids close at 6 pm

Selling **50** Simmental & SimAngus Bulls

AI SIRES INCLUDE

OMF Epic E27

LCDR Makin Waves 711E

BCLR Manifesto G352

Make your calves black!

CHRIS home: 605-539-9522 cell:605-354-4236 • AMY 605-350-0103 • ALEX 605-350-0200

DVAuction

www.ChristensenSimmental.com • www.dvauction.com • View the bulls at the ranch 7N 7W of Wessington Springs, SD

DAKOTA POWER SIMGENETIC BULL & FEMALE SALE

MONDAY, FEBRUARY 14, 2022 | HANNAFORD, ND

SELLING 50 YEARLING BULLS & 15 BRED HEIFERS
RED & BLACK SIMMENTAL & SIMANGUS CATTLE



FUNCTIONAL SIM-GENETICS FOR THE 'DAKOTA COMMERCIAL CATTLEMAN

J166 | ASA# 3938888 | Adj BW 94 | Adj WW 770
TNT UNION x LRS TURNING POINT
EPDs 8 2.7 87 132 4 24 68 API 129 TI 83



J161

ASA# 3938937 | Adj BW 80 | Adj WW 817
THSR KONG x SPRINGCREEK GRAND SLAM
EPDs 10 1.4 96 143 7 25 73 API 131 TI 85



J138

ASA# 3938903 | Adj BW 104 | Adj WW 841
TRAX RED RIVER x THSR BOMBARDIER
EPDs 10 3.0 92 151 10 27 72 API 127 TI 82



J189

ASA# 3938955 | Adj BW 96 | Adj WW 738
VJT F27 x BBS TRUE JUSTICE
EPDs 6 5.0 87 138 3 23 67 API 118 TI 77



J143

ASA# 3938920 | Adj BW 98 | Adj WW 938
WS PROCLAMATION x LRS TURNING POINT
EPDs 9 2.5 95 141 6 35 82 API 147 TI 94



J124

ASA# 3938911 | Adj BW 82 | Adj WW 911
TRAX RED RIVER x WS PRIME BEEF
EPDs 11 1.5 101 161 9 32 83 API 136 TI 93



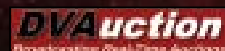
J180

ASA# 3938989 | Adj BW 78 | Adj WW 804
CCR PAYWEIGHT x LRS ICONIC
EPDs 16 -0.8 95 138 9 15 62 API 144 TI 89

Triple H Simmentals

Kelly & Bryan Hanson | 701-789-1391 or 701-789-0655
11010 County Road 26 Hannaford, ND 58448

VIEW VIDEOS AND BID ONLINE!



REQUEST YOUR SALE CATALOG TODAY!

www.triplehsimmentals.com



SALE REPORTS

SOUTH DAKOTA SOURCE SIMMENTAL SALE

December 18, 2021
Ramada Inn • Mitchell, SD

Sales Management...DP Sales Management
Auctioneer..... Chisum Peterson
Sale Staff.....Jim Scheel, Kelly Schmidt,
and Jeff Kapperman
DV Auction.....Justin Dikoff

54 LOTS AVERAGED: \$3,519

HIGH SELLING LOTS INCLUDE:

Lot 1.....\$16,000

CKCC Ms Jeanie 1749J

Sire: ES Right Time FA110-4
Consignor: CK Cattle Company
Buyer: Brent Roller, MN

Lot 1A-E.....\$14,500

ES Right Time FA110-4 semen

Sire: Welshs Dew it Right
Consignor: CK Cattle Company
Buyer: Various Buyers

Lot 19.....\$7,000

STF Miss ZW87 Pregnancy

Sire: W/C Fort Knox 609F
Consignor: Hilltop & HTP Simmentals
Buyer: Traxinger Simmentals, SD

Lot 18.....\$5,750

W/C Miss Werning 6026D Flush

Consignor: Werning Cattle Co.
Buyer: Pleasant Hill Farms, KY

Lot 2.....\$5,500

GS/SS/LEFS Red Sam J113

Sire: Hook's Xpectation 36X
Consignor: Lehrman, Sloup, & Gonsior
Buyer: Deckert Sim-Red Angus, ND

Lot 32.....\$5,300

S/S PB Jade 504J

Sire: SC Pay the Price C11
Consignor: S/S Livestock
Buyer: Brayden Hanson, ND

Lot 35.....\$4,750

Cables Ms. Proclamation 628J

Sire: WS Proclamation
Consignor: Cable C-Cross Ranch
Buyer: Michael Traxinger, SD

Lot 16.....\$4,750

CMW ML Ginger 101D

Sire: WLE Uno Mas
Bred to: KRJ Dakota Outlaw
Consignor: Double J Simmentals
Buyer: Superior Simmentals, UT

Lot 37.....\$4,400

STG Jezebel J114G

Sire: Mr. SR 71 Right Now E1538
Consignor: Theresa Claeys
Buyer: Jake Tiede, SD

Lot 12.....\$4,250

TSN Miss Innovator H726

Sire: CDI Innovator
Bred to: KBHR High Road
Consignor: TSN Simmentals
Buyer: Cable C-Cross Ranch, SD

Lot 13.....\$4,000

TSN Miss Beacon H737

Sire: Hook's Beacon
Bred to: GAR Hometown
Consignor: TSN Simmentals
Buyer: Ron Gilliland, CA

Lot 10.....\$3,950

2E Harmony 4H

Sire: Hook's Black Hawk 50B
Bred to: LCDR Affirmed
Consignor: Double E Simmentals
Buyer: Ed Fishbach, SD

Lot 20B.....\$3,750

TOST Ms Deidra 612D embryos

Sire: LCDR Favor
Consignor: Tostenson Family VCattle
Buyer: Roland Henry, TX

Lot 11.....\$3,700

ALL In Gigi

Sire: GSC All In 72A
Bred to: W/C Rest Easy
Consignor: Michael C Waid, DVM
Buyer: Randy & Dawn Rinehart

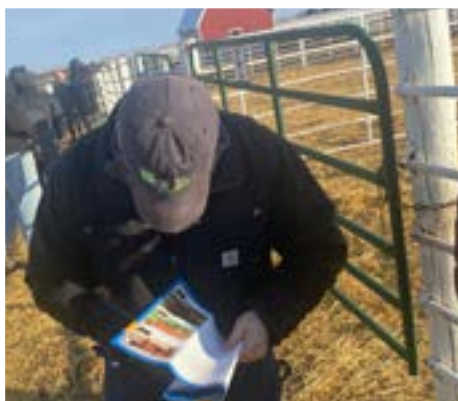
Lot 8.....\$3,500

Gonsior Hossanna H3

Sire: W/C Bankroll 811D
Bred to: SO Remedy
Consignor: Gonsior Simmentals
Buyer: Chris Woerner, NE



*From top:
Scenes
from the
South
Dakota
Source
Simmental
Sale*





ANNUAL PRODUCTION SALE
Wednesday,
Feb. 9, 2022

1 p.m. • At the Ranch • Douglas, N.D.
Join us for lunch at 11 a.m.

selling **49** Black & Red
 Simmental & SimAngus™ Bulls

Featuring progeny of these sires:



EGL Firesteel



Hooks Eagle



MR SR Mic Drop



Leachman Cadillac



RF Bullet Proof



TJ Main Event

OTHER SIRES INCLUDE:

- CCR Frontier
- WS All Aboard
- CCR Cowboy Cut
- MR SR Right Now
- TJ Gold
- TJ Franchise
- SHSF Freight Liner



SYS Juliet A61
 ET sons by EGL Firesteel sell



SYS Ms Diplomat F18
 Red and Black ET sons by WS All Aboard sell!

Call, e-mail, text or check our website for more information or to request a catalog!

Gary Sys: (701) 509-1154 • Derek Sys: (701) 509-5870
E-mail: dj.sys@hotmail.com • www.SysSimmentals.com
Watch for our female consignments in the Northwest Select Simmental Sale!

This sale will be broadcast live on the internet.

DVAuction
Broadcasting Real-Time Auctions
 Real time bidding & proxy bidding available.

ADVERTISER'S INDEX

3C Christensen Ranch.....	37
Bata Brothers.....	11
Bell Simmentals.....	11
Benda Ranch.....	47
Brink Simmentals.....	40
Christensen Simmental.....	58
CK Cattle.....	BC
Dakota XPress.....	17
Deckert Sim-Red Angus.....	51
Diamond M Cattle Company.....	64
Double J Farms.....	39
Double T Simmentals.....	13
East Poplar Simmentals.....	24
Eckstrum Simmental.....	65
Edge of the West.....	53
Eichacker Simmentals.....	25
Ellingson Simmentals.....	33
G&D/Martin.....	57
Goeken.....	23
Hart Simmentals.....	7
Hartman Cattle Company.....	IFC
Healy Simmental.....	46
Hoiby Simmental Ranch.....	55
ImmuCell.....	22
Keller Broken Heart Ranch.....	21
Kenner Simmental.....	IBC
Klain Simmental Ranch.....	9
Kline Simmental.....	35
Koepplin's Black Simmentals.....	43
Kunkel Simmental.....	45
Labatte Simmentals.....	24
Lazy C Diamond Simmental Ranch.....	30
Martin Trudeau Insurance.....	48
NLC Simmental Ranch.....	37
Quandt Brothers.....	63
Rendezvous Farms.....	41
Rust Mountain View.....	56
Rydeen Farms.....	38
SM Fleckvieh.....	20
Stavick Simmental.....	15
Sys Simmentals.....	61
Thyen Simmentals.....	49
TNT Simmentals.....	27
Traxinger Simmental.....	19
Triple H Simmentals.....	59
TSN Simmentals.....	31
VanderWal.....	8
Wager Cattle.....	BC
Wicks Cattle.....	36
Wilkinson Farms Simmentals.....	5

SALE REPORTS

ND SIMMENTAL ASSOC. CLASSIC SALE

December 11, 2021
Kist Livestock • Mandan, ND

Auctioneer.....Tracy Harl
Sale Manager.....Thomas Livestock Services
Agri-Media Rep.....Kirby Goetsch

45 BRED HEIFERS AVERAGE \$4,842
7 HEIFER CALVES AVERAGE \$4,821
5 ET LOTS AVERAGE \$500

BRED HEIFERS:

Lot 1..... \$12,000
The pick of the replacement bred heifers at Kenner Simmental Ranch, Leeds, ND, sold to Cow Camp Ranch, Lost Springs, KS

Lot 16..... \$10,000
KR Miss Halsey H15
Born: February 28, 2020
Pedigree: Hook's Black Hawk 50B x OMF Dapper Dan D14; bred to Hook's Bozeman 8B
Consignor: Kaelberer Ranch, New Salem, ND
Buyer: Gilliland Livestock, Davis, CA

Lot 43..... \$9,500
TRAXS Riddler H031

Born: March 26, 2020
Pedigree: LFE The Riddler 323B x CCR Cowboy Cut 5048Z; bred to Colorado Bridle Bit E752
Consignor: Traxinger Farm, Houghton, SD,
Buyer: Mandan Lake Simmental, Center, ND

Lot 26..... \$9,000
QB MS H032

Born: March 5, 2020
Pedigree: LFE The Riddler 323B x CCR Santa Fe 9349Z, sold bred to Schooley Stand Out 27G
Consignor: Quandt Brothers, Oaks, ND
Buyer: Kunkel Simmental, New Salem, ND

TOP SELLING HEIFER CALF:
Lot 53..... \$10,500
TT Jewel 108J

Born: February 18, 2021
Pedigree: TJ Gold 274G x TT Progress 215B,
Consignor: Double T Simmentals, Turtle Lake, ND
Buyer: Rydeen Farms, Clearbrook, MN



Scenes from the North Dakota Simmental Classic Sale

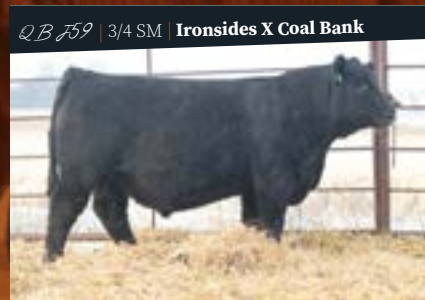


KU **Quandt Brothers**

Cattle Company | Oakes, ND

10th Annual Bull Sale **FEBRUARY 15**

Offering Approximately 60 Simmental & SimAngus Bulls & 10 Bred Heifers



Join us at the farm for the 10th Annual Bull Sale // 11020 93rd Street Oakes, ND 58474 // 1 PM CST - Lunch Served Prior

JASON QUANDT 701.710.0080 // **GABE QUANDT** 701.408.9154

WWW.QUANDTBROTHERS.COM

@qbcattlecompany

DVAuction
Broadcasting Real-Time Auctions



DIAMOND M CATTLE COMPANY

SIMMENTAL SIMANGUS

BULL SALE



he sells

**DMCC
STOCKMAN**

SimAngus

{ he is made for the stockman }

DMCC

Proven Prefix.

People you can Trust.

Cattle you can build on.

MARCH **16** 2022

LiveOnline™

CCI.LIVE

HIAWATHA, KANSAS

PUTTIN' BEEF WHERE IT COUNTS, IN YOUR POCKET BOOK!

EKSTRUM SIMMENTALS
Annual Bull Sale | February 5, 2022 | Kimball, SD



EKR Sonic 472J

ASA# 3964034 • BD 3/3/21 • BW 102# • WW 792#
EPDs CE 9.0 BW 3.3 WW 86.8 YW 124.3
MCE 3.9 MM 22.9 MWW 65.1 API 102.0 TI 70.2



EKR Red Quake 809J

ASA# 3964281 • BD 2/18/21 • BW 81# • WW 812#
EPDs CE 9.0 BW 2.4 WW 82.6 YW 121.3
MCE 3.1 MM 30.9 MWW 70.3 API 102.0 TI 76.3



EKR Commissioner 532J

ASA# 3964139 • BD 2/23/21 • BW 101# • WW 842#
EPDs CE 4.4 BW 5.9 WW 102.3 YW 154.4
MCE 6.3 MM 23.3 MWW 72.4 API 125.1 TI 83.5



EKR Red Ballistic 134J

ASA# 3964239 • BD 2/8/21 • BW 99# • WW 826#
EPDs CE 5.3 BW 5.4 WW 90.6 YW 137.6
MCE 4.5 MM 25.1 MWW 70.4 API 119.3 TI 78.5

RAISING OUTCROSS PERFORMANCE SIMMENTAL GENETICS FOR OVER 50 YEARS!



RAISING
SIMMENTALS
SINCE 1970

EKSTRUM
SIMMENTALS
& SIMM/GENETICS

EKSTRUM SIMMENTALS & SIMGENETICS

Clay Ekstrum: (H) 605-778-6185 / (C) 605-730-1511 | John Ekstrum: 605-778-6414
36220 257th St. Kimball, SD 57355 | Email: clayekstrum@midstatesd.net

Find us on Facebook: Ekstrum Simmentals

WWW.EKSTRUMSIMMENTALS.COM

South Dakota's source for outcross performance Simmentals specializing in red breeding stock

Videos online & live sale broadcast at www.dvauction.com



Coming Events

JANUARY, 2022

- JAN. 26** SIOUX EMPIRE LIVESTOCK SHOW Simmental Show and Sale, *Sioux Falls, SD*
- JAN. 28** ELLINGSON SIMMENTALS, Annual Production Sale, *Dahlen, ND*
- JAN. 28** DOUBLE J FARMS 48th Annual Production Sale, *Garretson, SD*

FEBRUARY, 2022

- FEB. 1** KOEPLINS BLACK SIMMENTALS Annual Production Sale, *Mandan, ND*
- FEB. 2** BEGGERS DIAMOND V BIG SKY Genetic Source Sale, *Wibaux, MT*
- FEB. 2** LAZY C DIAMOND RANCH Annual Production Sale, *Kintyre, ND*
- FEB. 3** STAVICK SIMMENTALS Annual Production Sale, *Veblen, SD*
- FEB. 4** KUNKEL SIMMENTAL Annual Bull and Female Sale, *New Salem, ND*
- FEB. 4** HEALY SIMMENTAL Annual Bull Sale, *Yankton, SD*
- FEB. 5** ECKSTRUM SIMMENTALS Annual Production Sale, *Kimball, SD*
- FEB. 5** G&D/MARTIN SIMMENTAL Production Sale, *Calvin, ND*

FEBRUARY, 2022, continued

- FEB. 5** BLACK HILLS STOCK SHOW Show and Sale, *Rapid City, SD*
- FEB. 5** KLAIN SIMMENTAL Annual Production Sale, *Ruso, ND*
- FEB. 6** HARTMAN CATTLE COMPANY 8th Annual Simmental Bull Sale, *Tecumseh, NE*
- FEB. 6** KLINE SIMMENTAL RANCH 10th Annual Production Sale, *Hurdsfield, ND*
- FEB. 7** WICKS CATTLE SIMANGUS, SIMMENTAL & ANGUS Annual Bull and Female Sale, *Richardton, ND*
- FEB. 7** DAKOTA POWER Annual Bull Sale, *Valley City, ND*
- FEB. 8** EDGE OF THE WEST Annual Production Sale, *Mandan, ND*
- FEB. 8** WERNING CATTLE COMPANY Annual Production Sale, *Emery, SD*
- FEB. 9** TRAXINGER SIMMENTAL Annual Production Sale, *Houghton, SD*
- FEB. 9** WILLKINSON FARMS SIMMENTAL Breeding for the Future Sale, *Montpelier, ND*

FEBRUARY, 2022, continued

- FEB. 9** JACKPOT CATTLE COMPANY Annual Production Sale, *Wessington, SD*
- FEB. 10** RUST MOUNTAIN VIEW RANCH 11th Annual Bull Sale, *Mercer, ND*
- FEB. 10** LASSLE RANCH SIMMENTALS Annual Bull Sale, *Glendive, MT*
- FEB. 11** TNT SIMMENTALS 37th Annual Bull Sale, *ONLINE*
- FEB. 11** BATA BROTHERS/BELL FAMILY 24th Annual Bull Sale, *Rugby, ND*
- FEB. 11** WATERTOWN FARM SHOW Show and Sale, *Watertown, SD*
- FEB. 12** KENNER SIMMENTAL 26th Annual Production Sale, *Leeds, ND*
- FEB. 12** RYDEEN FARMS 24th Annual Bull Sale, *Clearbrook, MN*
- FEB. 12** CK EFFLING AND WAGER CATTLE Annual Bull Sale, *Highmore, SD*
- FEB. 14** BENDA SIMMENTALS Annual Production Sale, *Kimball, SD*
- FEB. 15** RENDEVOUS FARMS 17th Annual Holiday Monday Sale, *Ste. Rose du Lac, MB*
- FEB. 15** QUANT BROTHERS Annual Sale, *Oakes, ND*
- FEB. 16** HART FARMS Beef Builder Sale, *Frederick, SD*
- FEB. 16** M&J/ GLASMAN FARMS SIMMENTAL & ANGUS 2 Year Old Bull & Femal Sale, *Russell, MB*
- FEB. 18** R&R CATTLE COMPANY Annual Bull and Female Sale, *Chamberlain, SD*
- FEB. 18** DAKOTA XPRESS Annual Production Sale, *Mandan, ND*
- FEB. 19** SCHNABEL RANCH SIMMENTALS Annual Production Sale, *Aberdeen, SD*
- FEB. 19** HOIBY SIMMENTALS Annual Production Sale, *McGregor, ND*
- FEB. 19** DOUBLE T SIMMENTALS Annual Production Sale, *Turtle Lake, ND*
- FEB. 23** C DIAMOND SIMMENTALS Annual Production Sale, *Dawson, ND*
- FEB. 25** BEITELSPACHERS RANCH Annual Production Sale, *Mobridge, SD*
- FEB. 26** LEWIS FARMS Annual Production Sale, *Spruce Grove, AB*
- FEB. 27** RAML CATTLE Annual Production Sale, *Goodwin, SD*
- FEB. 28** LEHRMAN FAMILY FARMS Annual Production Sale, *Mitchell, SD*

MARCH, 2022

- MAR. 1** DOLL CHAROLAIS & SIMMENTAL RANCH Annual Production Sale, *Mandan, ND*
- MAR. 3** KELLER BROKEN HEART RANCH Annual Production Sale, *Mandan, ND*
- MAR. 4** LABATTE SIMMENTALS 42nd Annual Bull & Female Sale, *Moose Jaw, SK*
- MAR. 4** EICHACKER SIMMENTALS Annual Production Sale, *Salem, SD*
- MAR. 5** MRL RANCH Annual Production Sale, *Carievale, SK*
- MAR. 5** ROCKY KNOLL Annual Production Sale, *Aberdeen, ND*
- MAR. 6** R PLUS 21st Annual Production Sale, *Estevan, SK*
- MAR. 6** WINDY CREEK CATTLE COMPANY Profit through Performance Sale, *Spencer, SD*
- MAR. 7** ASHWORTH FARM & RANCH Annual Production Sale, *Oungra, SK*
- MAR. 7** CANADIAN CENTRAL Bull & Female Sale, *Winnipeg, MT*
- MAR. 8** BONCHUK FARMS Annual Bull Sale, *Virder, MB*
- MAR. 12** NORTHWEST ND SELECT SALE Annual Sale, *Ross, ND*
- MAR. 12** I-29 BULL RUN Annual Production Sale, *Sioux Falls, SD*
- MAR. 14** OAKVIEW/PERKIN/TRIPLE R Simmental Bull Sale, *Brandon, MB*
- MAR. 15** PRAIRE PARTNERS Bull & Female Sale, *Killarney, MB*
- MAR. 17** TRANSCON'S PREMIUM BEEF Simmental Bull Sale, *Neepawa, MB*
- MAR. 18** NLC SIMMENTAL RANCH/3C CHRISTENSEN RANCH 50th Annual Production Sale, *Wessington, SD*
- MAR. 18** HIGH BLUFF STOCK FARMS Charolais & Simmental Bull Sale, *Inglis, MB*
- MAR. 19** PROUDLY WESTERN Simmental Bull Sale, *Whitewood, SK*
- MAR. 21** TRANSCON'S CATTLE COUNTRY Simmental Bull Sale, *Neepawa, MB*
- MAR. 21** HALL STOCK FARM Annual Production Sale, *Berthold, ND*
- MAR. 24** WHEATLAND CATTLE COMPANY Annual Bull Sale, *Bienville, SK*



26TH ANNUAL PRODUCTION SALE
FEBRUARY 12, 2022 1:00 PM CST / AT THE RANCH / LEEDS, ND
Selling 120 Bulls & 65 Bred Heifers / Black & Red - Purebred, SimAngus & Red Angus

POWER UP YOUR HERD

WITH HYBRID VIGOR!

KENNER SIMMENTAL RANCH

CAPITALIZE ON GROWTH WITHOUT SACRIFICING MATERNAL VALUE
WITH OUR SIMMENTAL, SIMANGUS & RED ANGUS GENETICS!



J285 - SimAngus

Sitz Stellar 726D x KS Federica F298 (LFE The Riddler)
EPDs 14 -1.1 95 151 8 27 74 API 151 TI 97

One of several ET brothers by our new exciting donor sells in this sale!



VISIT OUR WEBSITE
TO REQUEST A SALE
CATALOG TODAY!



J2038 - PB SM

LCDR Intrigue 749E x BGL Zahara Z159B (BCLR ShamWow)
EPDs 15 0.0 84 124 7 30 72 API 164 TI 90
Several full ET brothers sell in this offering!



Join us Friday evening, February 11, for an educational program with Chip Kemp, ASA Director of Commercial and Industry Operations, at 5:00 pm at the sale facility.



J150 - PB SM

BCLR Manifesto x KS Tailored
EPDs 4 4.8 99 149 2 30 80 API 136 TI 91
The Manifesto sons are impressive!



J257 - SimAngus

RFS Bulletproof B42 x HBR Ginger 377-513
EPDs 8 3.3 92 151 7 24 70 API 131 TI 83
Many red SimAngus bulls in the offering.



H334 - PB SM

SHSF Freightliner D10 x LRS Viewpoint
EPDs 9 2.5 90 139 7 25 71 API 139 TI 87
AI bred to Colorado Bridle Bit

ENTER TO WIN!

Visit the farm to view the sale offering from December 1st through February 11th to be entered to win a **\$500 SALE CREDIT** to be used at our 2022 production sale!

12/13/21 EPDs: CE BW WW YW MCE Milk MWW API TI



Roger, Jeanette & Erika Kenner
Erika 406-581-1188 / Roger 701-466-2800
Herdsman, Bryan Leapaldt 701-466-2553 • C. 701-739-8764
erika.kenner@gmail.com / 5606 57th St NE Leeds, North Dakota 58346

WWW.KENNERSIMMENTAL.COM

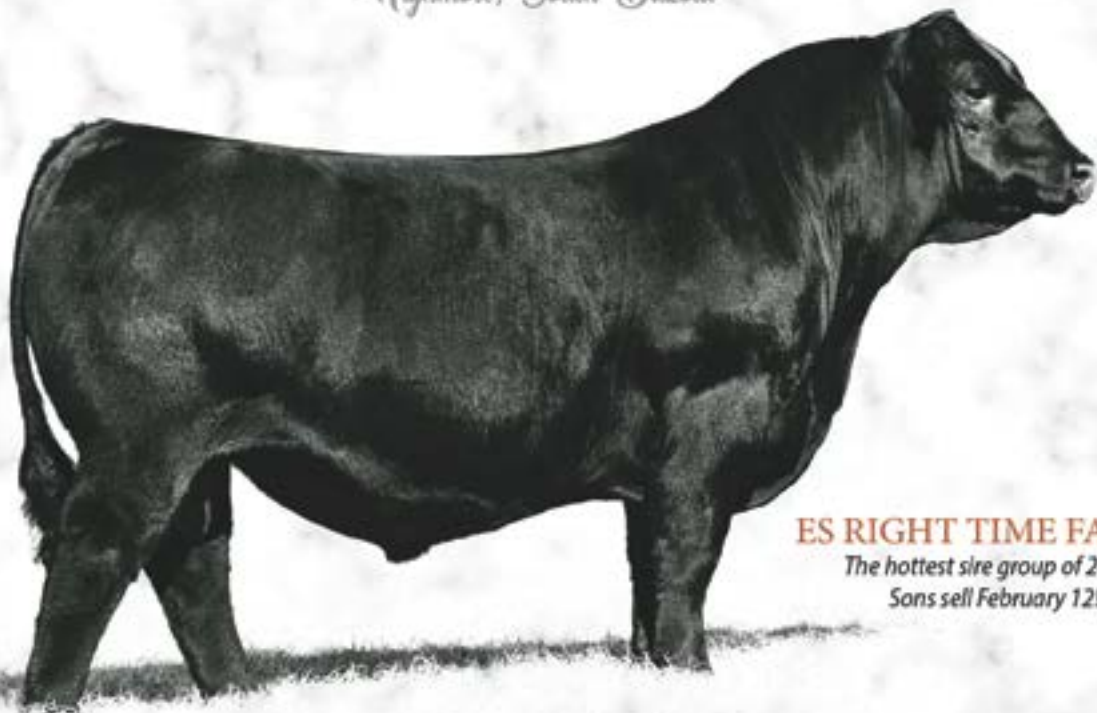


Videos Online DVAuctions by Mid-January

The Fifth Annual
CK CATTLE & WAGER CATTLE
PRODUCTION SALE

SATURDAY | FEBRUARY 12, 2022 | 3:00 PM

Highmore, South Dakota



ES RIGHT TIME FA110-4

*The hottest sire group of 2021!
Sons sell February 12!*



EC REBEL 156F
Sons Sell!



**MUSGRAVE 316
STUNNER**
Sons Sell!



OMF EPIC E27
Sons Sell!



HOOK'S EAGLE 6E
Sons Sell!



95 SIMMENTAL BULLS AND 45 BRED HEIFERS
Featuring a powerful offering of Simmental & SimAngus Bulls & Bred Heifers

ASA
The
PERFORMANCE
RECORDS
CKEFFLING.COM
DVAuction

CK cattle
CHRIS & KRISTI EFFLING
Cagney, Chesney, & Kenidey
Chris: 605.769.0142
Kristi: 605.769.1308

Wager cattle
LANNY & JAYNE WAGER
Dusty & Aimee Wager
Lanny: 605.769.1211
Dusty: 605.769.5010

Sale Management by:
INNOVATION
AgMarketing, LLC
Jered Shipman: (806) 983-7226
Graham Blagg: (530) 913-6418
Tim Anderson: (605) 682-9343
innovationagmarketing.com